

NEU · NEW

**NEUE PRODUKTE
NEW PRODUCTS**

2023 II

STRACK®

NORMALIEN

Stanz- und Umformwerkzeuge

Punching and forming tool

STRACK NORMA bietet dem Kunden das Komplettprogramm der Werkzeugnormalien für Stanz- und Umformwerkzeuge an. Da sie eine problemlose Austauschbarkeit gewährleisten, schnell wiederbeschafft werden können und Kostenvorteile bei der Produktion größerer Stückzahlen bieten, sind die als standardisierte Bauelemente bekannten Stanznormalien in vielfacher Hinsicht sowohl bei kleineren als auch großen Stückzahlen wichtig. Um aus Blechen oder anderen Materialien eine bestimmte Form in mehrfacher Ausführung zu gewinnen, benötigt der Anwender Stanz- und Umformwerkzeuge. Hier liefert STRACK Normteile für kleinere und mittlere Werkzeuge, aber auch für Großwerkzeuge in der Automobilindustrie. Durch den Einsatz von Normalien verkürzt sich der Herstellungsprozess im Werkzeugbau und die Konzentration des Anwenders auf seine Kernkompetenzen führt somit zur Effizienzsteigerung. Zudem kann der Konstrukteur auf CAD-Bibliotheken zugreifen, um sich die standardisierten Bauteile kostenlos herunterzuladen. Positiv wirkt sich dies in der Verschlankung des Konstruktionsprozesses und dem schnellen Reagieren bei Änderungswünschen aus. Der Bereich der Stanz- und Umformwerkzeuge umfasst neben Federelementen ein auf jeden Einsatzfall ausgelegtes Führungselementprogramm, Schneidelemente, Prägestempel auch Teileförderer. Gasdruckfedern, Verbund- und Tankplattensysteme und die eigens entwickelte STRACK Normschieberreihe PowerMax[®] vervollständigen das Produktangebot.

STRACK NORMA offers the customer the complete program of tool standard parts for punching and forming tools. Because they ensure a trouble-free interchangeability, can be repro-cured quickly and offer other cost advantages in the production of larger piece numbers, the punching standard parts, known as standardized components, are in many ways important at smaller and large piece numbers. The user requires punching- and forming tools to gain a certain form in multiple versions from sheets or other materials. Here STRACK NORMA delivers standard parts for smaller and medium-sized tools, but also for large tools in the automotive industry. The manufacturing process in the tooling is reduced by using standard parts and the concentration of the user on his core competencies thus leads to an increase of efficiency. In addition, the designer can access to CAD-libraries to download the standardized components free of charge. This has a positive effect on the downsizing of the construction process in the tooling and on the quick response in case of modification requests. The range of the punching- and forming tools includes, in addition to spring elements, a guiding element program designed for every application, cutting elements, embossing stamps, also part conveyors. Gas springs, composite- and manifold plate systems and the specially developed STRACK standard cam series PowerMax[®] complete the product range.

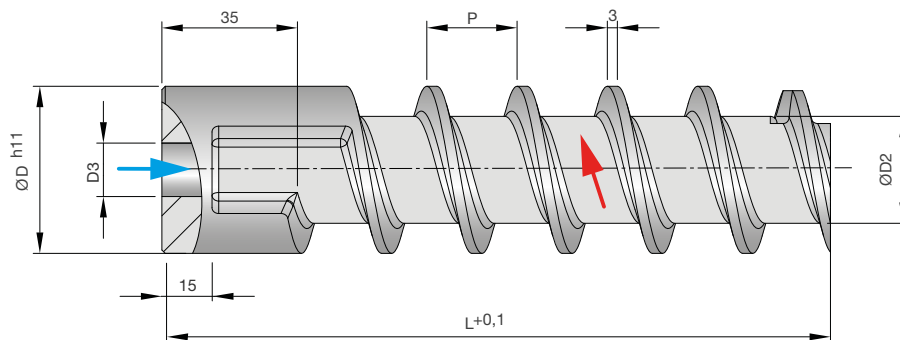
					
Z7776 1	Z7777 3	Z7778 5	Z42010-Set 7	Z42020 9	Z42030 11
					
Z42040 12	Z42950 13	Z42050 14	Z4234 15	Z72 16	SR 18
					
Z71 19	Z7702 20	ELS-60T 21	PL 22	PL-60T 23	SN11011 24
					
SN11012 25	SN11013 26	SN2884-1500 27	SN2884-2400 28	SN2884-3000 29	SN2884-4500 30
					
SN5630 31	SN4413 32	SN4414 33	Z9087 34	SN1595 35	SN1597 36
					
SN1599 37					




Z7776

Spiralkern eingängig

Spiral core single-circuit

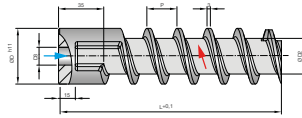


Mat.: PA12  < 1%
max. 135°C



D	L	D3	D2	P	Order No.
12	125	5	8	13	Z7776-12-125-5
12	150	5	8	13	Z7776-12-150-5
12	175	5	8	13	Z7776-12-175-5
12	200	5	8	13	Z7776-12-200-5
12	250	5	8	13	Z7776-12-250-5
16	125	5	11	14	Z7776-16-125-5
16	125	6	11	14	Z7776-16-125-6
16	150	5	11	14	Z7776-16-150-5
16	150	6	11	14	Z7776-16-150-6
16	175	5	11	14	Z7776-16-175-5
16	175	6	11	14	Z7776-16-175-6
16	200	5	11	14	Z7776-16-200-5
16	200	6	11	14	Z7776-16-200-6
16	250	5	11	14	Z7776-16-250-5
16	250	6	11	14	Z7776-16-250-6
20	125	5	13	18	Z7776-20-125-5
20	125	6	13	18	Z7776-20-125-6
20	125	8	13	18	Z7776-20-125-8
20	150	5	13	18	Z7776-20-150-5
20	150	6	13	18	Z7776-20-150-6
20	150	8	13	18	Z7776-20-150-8
20	175	5	13	18	Z7776-20-175-5
20	175	6	13	18	Z7776-20-175-6
20	175	8	13	18	Z7776-20-175-8
20	200	5	13	18	Z7776-20-200-5
20	200	6	13	18	Z7776-20-200-6
20	200	8	13	18	Z7776-20-200-8
20	250	5	13	18	Z7776-20-250-5
20	250	6	13	18	Z7776-20-250-6
20	250	8	13	18	Z7776-20-250-8
25	125	6	15	20	Z7776-25-125-6
25	125	8	15	20	Z7776-25-125-8
25	125	10	15	20	Z7776-25-125-10
25	150	6	15	20	Z7776-25-150-6
25	150	8	15	20	Z7776-25-150-8
25	150	10	15	20	Z7776-25-150-10
25	175	6	15	20	Z7776-25-175-6
25	175	8	15	20	Z7776-25-175-8

D	L	D3	D2	P	Order No.
25	175	10	15	20	Z7776-25-175-10
25	200	6	15	20	Z7776-25-200-6
25	200	8	15	20	Z7776-25-200-8
25	200	10	15	20	Z7776-25-200-10
25	250	6	15	20	Z7776-25-250-6
25	250	8	15	20	Z7776-25-250-8
25	250	10	15	20	Z7776-25-250-10
32	125	8	22	27	Z7776-32-125-8
32	125	10	22	27	Z7776-32-125-10
32	125	12	22	27	Z7776-32-125-12
32	150	8	22	27	Z7776-32-150-8
32	150	10	22	27	Z7776-32-150-10
32	150	12	22	27	Z7776-32-150-12
32	175	8	22	27	Z7776-32-175-8
32	175	10	22	27	Z7776-32-175-10
32	175	12	22	27	Z7776-32-175-12
32	200	8	22	27	Z7776-32-200-8
32	200	10	22	27	Z7776-32-200-10
32	200	12	22	27	Z7776-32-200-12
32	250	8	22	27	Z7776-32-250-8
32	250	10	22	27	Z7776-32-250-10
32	250	12	22	27	Z7776-32-250-12
40	125	10	26	26	Z7776-40-125-10
40	125	12	26	26	Z7776-40-125-12
40	125	14	26	26	Z7776-40-125-14
40	150	10	26	26	Z7776-40-150-10
40	150	12	26	26	Z7776-40-150-12
40	150	14	26	26	Z7776-40-150-14
40	175	10	26	26	Z7776-40-175-10
40	175	12	26	26	Z7776-40-175-12
40	175	14	26	26	Z7776-40-175-14
40	200	10	26	26	Z7776-40-200-10
40	200	12	26	26	Z7776-40-200-12
40	200	14	26	26	Z7776-40-200-14
40	250	10	26	27	Z7776-40-250-10
40	250	12	26	27	Z7776-40-250-12
40	250	14	26	27	Z7776-40-250-14
50	125	14	32	27	Z7776-50-125-14

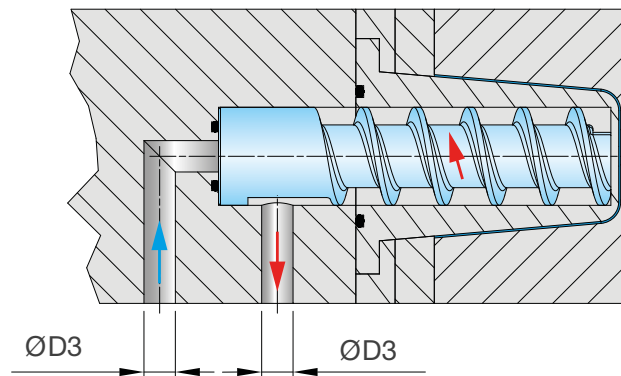


D	L	D3	D2	P	Order No.
50	125	16	32	27	Z7776-50-125-16
50	150	12	32	27	Z7776-50-150-12
50	150	14	32	27	Z7776-50-150-14
50	150	16	32	27	Z7776-50-150-16
50	175	12	32	27	Z7776-50-175-12
50	175	14	32	27	Z7776-50-175-14
50	175	16	32	27	Z7776-50-175-16
50	200	12	32	27	Z7776-50-200-12
50	200	14	32	27	Z7776-50-200-14
50	200	16	32	27	Z7776-50-200-16
50	250	12	32	27	Z7776-50-250-12
50	250	14	32	27	Z7776-50-250-14
50	250	16	32	27	Z7776-50-250-16
60	150	12	42	28	Z7776-60-150-12
60	150	14	42	28	Z7776-60-150-14
60	150	16	42	28	Z7776-60-150-16
60	175	12	42	28	Z7776-60-175-12
60	175	14	42	28	Z7776-60-175-14
60	175	16	42	28	Z7776-60-175-16
60	200	12	42	28	Z7776-60-200-12
60	200	14	42	28	Z7776-60-200-14

D	L	D3	D2	P	Order No.
60	200	16	42	28	Z7776-60-200-16
60	250	12	42	28	Z7776-60-250-12
60	250	14	42	28	Z7776-60-250-14
60	250	16	42	28	Z7776-60-250-16
80	150	12	55	31	Z7776-80-150-12
80	150	14	55	31	Z7776-80-150-14
80	150	16	55	31	Z7776-80-150-16
80	150	20	55	31	Z7776-80-150-20
80	175	12	55	31	Z7776-80-175-12
80	175	14	55	31	Z7776-80-175-14
80	175	16	55	31	Z7776-80-175-16
80	175	20	55	31	Z7776-80-175-20
80	200	12	55	31	Z7776-80-200-12
80	200	14	55	31	Z7776-80-200-14
80	200	16	55	31	Z7776-80-200-16
80	200	20	55	31	Z7776-80-200-20
80	250	12	55	31	Z7776-80-250-12
80	250	14	55	31	Z7776-80-250-14
80	250	16	55	31	Z7776-80-250-16
80	250	20	55	31	Z7776-80-250-20

- 3D gedruckter Kühlkern flexibel an Konstruktion anpassbar
- Andere Durchmesser, Längen und Ausführungen kurzfristig lieferbar
- Keine Druckverluste durch Querschnittsänderung (rheologisch ausgelegt)

- 3D printed cooling core flexibly adaptable to design
- Other diameters, lengths and designs available at short notice
- No pressure loss due to change in cross-section (rheologically designed)

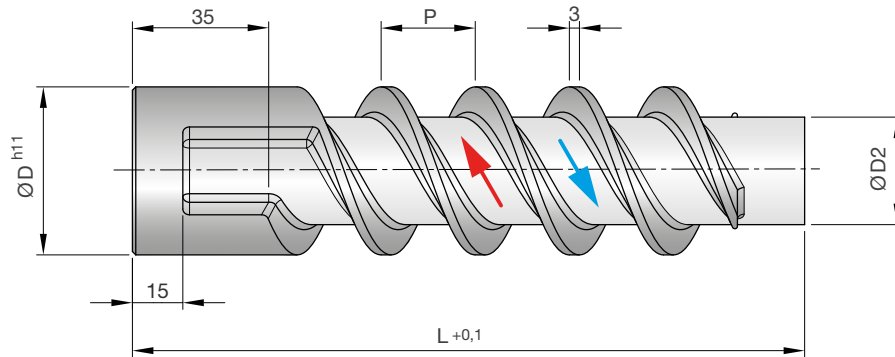





Z7777

Spiralkern zweigängig

Spiral core double-circuit



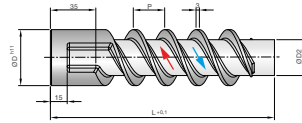
Mat.: PA12  < 1%
max. 135°C



D	L	D3	D2	P	Order No.
12	125	5	8	13	Z7777-12-125-5
12	150	5	8	13	Z7777-12-150-5
12	175	5	8	13	Z7777-12-175-5
12	200	5	8	13	Z7777-12-200-5
12	250	5	8	13	Z7777-12-250-5
16	125	5	11	14	Z7777-16-125-5
16	125	6	11	14	Z7777-16-125-6
16	150	5	11	14	Z7777-16-150-5
16	150	6	11	14	Z7777-16-150-6
16	175	5	11	14	Z7777-16-175-5
16	175	6	11	14	Z7777-16-175-6
16	200	5	11	14	Z7777-16-200-5
16	200	6	11	14	Z7777-16-200-6
16	250	5	11	14	Z7777-16-250-5
16	250	6	11	14	Z7777-16-250-6
20	125	5	13	18	Z7777-20-125-5
20	125	6	13	18	Z7777-20-125-6
20	125	8	13	18	Z7777-20-125-8
20	150	5	13	18	Z7777-20-150-5
20	150	6	13	18	Z7777-20-150-6
20	150	8	13	18	Z7777-20-150-8
20	175	5	13	18	Z7777-20-175-5
20	175	6	13	18	Z7777-20-175-6
20	175	8	13	18	Z7777-20-175-8
20	200	5	13	18	Z7777-20-200-5
20	200	6	13	18	Z7777-20-200-6
20	200	8	13	18	Z7777-20-200-8
20	250	5	13	18	Z7777-20-250-5
20	250	6	13	18	Z7777-20-250-6
20	250	8	13	18	Z7777-20-250-8
25	125	6	15	20	Z7777-25-125-6
25	125	8	15	20	Z7777-25-125-8
25	125	10	15	20	Z7777-25-125-10
25	150	6	15	20	Z7777-25-150-6
25	150	8	15	20	Z7777-25-150-8
25	150	10	15	20	Z7777-25-150-10
25	175	6	15	20	Z7777-25-175-6

D	L	D3	D2	P	Order No.
25	175	8	15	20	Z7777-25-175-8
25	175	10	15	20	Z7777-25-175-10
25	200	6	15	20	Z7777-25-200-6
25	200	8	15	20	Z7777-25-200-8
25	200	10	15	20	Z7777-25-200-10
25	250	6	15	20	Z7777-25-250-6
25	250	8	15	20	Z7777-25-250-8
25	250	10	15	20	Z7777-25-250-10
32	125	8	22	27	Z7777-32-125-8
32	125	10	22	27	Z7777-32-125-10
32	125	12	22	27	Z7777-32-125-12
32	150	8	22	27	Z7777-32-150-8
32	150	10	22	27	Z7777-32-150-10
32	150	12	22	27	Z7777-32-150-12
32	175	8	22	27	Z7777-32-175-8
32	175	10	22	27	Z7777-32-175-10
32	175	12	22	27	Z7777-32-175-12
32	200	8	22	27	Z7777-32-200-8
32	200	10	22	27	Z7777-32-200-10
32	200	12	22	27	Z7777-32-200-12
32	250	8	22	27	Z7777-32-250-8
32	250	10	22	27	Z7777-32-250-10
32	250	12	22	27	Z7777-32-250-12
40	125	10	26	26	Z7777-40-125-10
40	125	12	26	26	Z7777-40-125-12
40	125	14	26	26	Z7777-40-125-14
40	150	10	26	26	Z7777-40-150-10
40	150	12	26	26	Z7777-40-150-12
40	150	14	26	26	Z7777-40-150-14
40	175	10	26	26	Z7777-40-175-10
40	175	12	26	26	Z7777-40-175-12
40	175	14	26	26	Z7777-40-175-14
40	200	10	26	26	Z7777-40-200-10
40	200	12	26	26	Z7777-40-200-12
40	200	14	26	26	Z7777-40-200-14
40	250	10	26	27	Z7777-40-250-10
40	250	12	26	27	Z7777-40-250-12

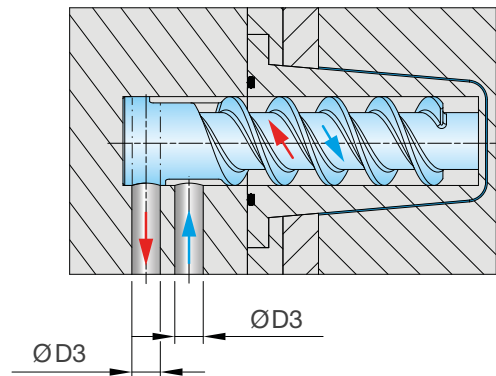
D-3031R 10.2023



D	L	D3	D2	P	Order No.	D	L	D3	D2	P	Order No.
40	250	14	26	27	Z7777-40-250-14	60	200	12	42	28	Z7777-60-200-12
50	125	12	32	27	Z7777-50-125-12	60	200	14	42	28	Z7777-60-200-14
50	125	14	32	27	Z7777-50-125-14	60	200	16	42	28	Z7777-60-200-16
50	125	16	32	27	Z7777-50-125-16	60	250	12	42	28	Z7777-60-250-12
50	150	12	32	27	Z7777-50-150-12	60	250	14	42	28	Z7777-60-250-14
50	150	14	32	27	Z7777-50-150-14	60	250	16	42	28	Z7777-60-250-16
50	150	16	32	27	Z7777-50-150-16	80	150	12	55	31	Z7777-80-150-12
50	175	12	32	27	Z7777-50-175-12	80	150	14	55	31	Z7777-80-150-14
50	175	14	32	27	Z7777-50-175-14	80	150	16	55	31	Z7777-80-150-16
50	175	16	32	27	Z7777-50-175-16	80	150	20	55	31	Z7777-80-150-20
50	200	12	32	27	Z7777-50-200-12	80	175	12	55	31	Z7777-80-175-12
50	200	14	32	27	Z7777-50-200-14	80	175	14	55	31	Z7777-80-175-14
50	200	16	32	27	Z7777-50-200-16	80	175	16	55	31	Z7777-80-175-16
50	250	12	32	27	Z7777-50-250-12	80	175	20	55	31	Z7777-80-175-20
50	250	14	32	27	Z7777-50-250-14	80	200	12	55	31	Z7777-80-200-12
50	250	16	32	27	Z7777-50-250-16	80	200	14	55	31	Z7777-80-200-14
60	150	12	42	28	Z7777-60-150-12	80	200	16	55	31	Z7777-80-200-16
60	150	14	42	28	Z7777-60-150-14	80	200	20	55	31	Z7777-80-200-20
60	150	16	42	28	Z7777-60-150-16	80	250	12	55	31	Z7777-80-250-12
60	175	12	42	28	Z7777-60-175-12	80	250	14	55	31	Z7777-80-250-14
60	175	14	42	28	Z7777-60-175-14	80	250	16	55	31	Z7777-80-250-16
60	175	16	42	28	Z7777-60-175-16	80	250	20	55	31	Z7777-80-250-20

- 3D gedruckter Kühlkern flexibel an Konstruktion anpassbar
- Andere Durchmesser, Längen und Ausführungen kurzfristig lieferbar
- Keine Druckverluste durch Querschnittsänderung (rheologisch ausgelegt)

- 3D printed cooling core flexibly adaptable to design
- Other diameters, lengths and designs available at short notice
- No pressure loss due to change in cross-section (rheologically designed)

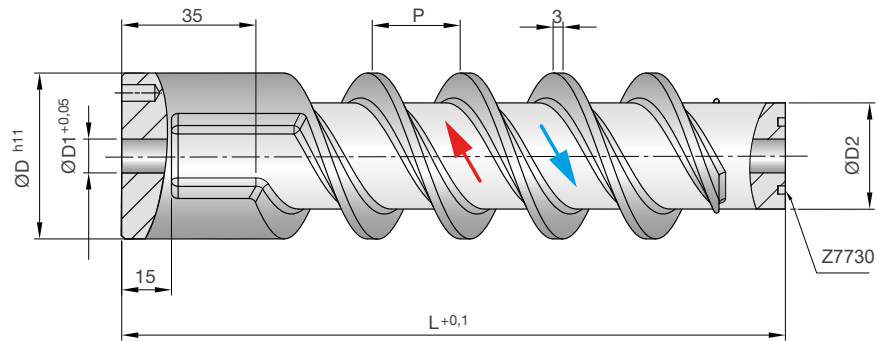





Z7778

Spiralkern zweigängig

Spiral core double-circuit

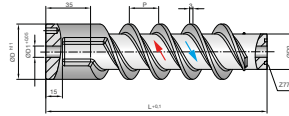


Mat.: PA12  < 1%
max. 135°C



D	L	D3	D1	D2	P	Z7730-	Order No.
25	125	6	5	15	20	7.5-1.5	Z7778-25-125-6-5
25	125	8	5	15	20	7.5-1.5	Z7778-25-125-8-5
25	125	10	5	15	20	7.5-1.5	Z7778-25-125-10-5
25	150	6	5	15	20	7.5-1.5	Z7778-25-150-6-5
25	150	8	5	15	20	7.5-1.5	Z7778-25-150-8-5
25	150	10	5	15	20	7.5-1.5	Z7778-25-150-10-5
25	175	6	5	15	20	7.5-1.5	Z7778-25-175-6-5
25	175	8	5	15	20	7.5-1.5	Z7778-25-175-8-5
25	175	10	5	15	20	7.5-1.5	Z7778-25-175-10-5
25	200	6	5	15	20	7.5-1.5	Z7778-25-200-6-5
25	200	8	5	15	20	7.5-1.5	Z7778-25-200-8-5
25	200	10	5	15	20	7.5-1.5	Z7778-25-200-10-5
25	250	6	5	15	20	7.5-1.5	Z7778-25-250-6-5
25	250	8	5	15	20	7.5-1.5	Z7778-25-250-8-5
25	250	10	5	15	20	7.5-1.5	Z7778-25-250-10-5
32	125	8	8	22	27	12-2	Z7778-32-125-8-8
32	125	10	8	22	27	12-2	Z7778-32-125-10-8
32	125	12	8	22	27	12-2	Z7778-32-125-12-8
32	150	8	8	22	27	12-2	Z7778-32-150-8-8
32	150	10	8	22	27	12-2	Z7778-32-150-10-8
32	150	12	8	22	27	12-2	Z7778-32-150-12-8
32	175	8	8	22	27	12-2	Z7778-32-175-8-8
32	175	10	8	22	27	12-2	Z7778-32-175-10-8
32	175	12	8	22	27	12-2	Z7778-32-175-12-8
32	200	8	8	22	27	12-2	Z7778-32-200-8-8
32	200	10	8	22	27	12-2	Z7778-32-200-10-8
32	200	12	8	22	27	12-2	Z7778-32-200-12-8
32	250	8	8	22	27	12-2	Z7778-32-250-8-8
32	250	10	8	22	27	12-2	Z7778-32-250-10-8
32	250	12	8	22	27	12-2	Z7778-32-250-12-8
40	125	10	10	26	26	15-2.5	Z7778-40-125-10-10
40	125	12	10	26	26	15-2.5	Z7778-40-125-12-10
40	125	14	10	26	26	15-2.5	Z7778-40-125-14-10
40	150	10	10	26	26	15-2.5	Z7778-40-150-10-10
40	150	12	10	26	26	15-2.5	Z7778-40-150-12-10
40	150	14	10	26	26	15-2.5	Z7778-40-150-14-10
40	175	10	10	26	26	15-2.5	Z7778-40-175-10-10
40	175	12	10	26	26	15-2.5	Z7778-40-175-12-10

D	L	D3	D1	D2	P	Z7730-	Order No.
40	175	14	10	26	26	15-2.5	Z7778-40-175-14-10
40	200	10	10	26	26	15-2.5	Z7778-40-200-10-10
40	200	12	10	26	26	15-2.5	Z7778-40-200-12-10
40	200	14	10	26	26	15-2.5	Z7778-40-200-14-10
40	250	10	10	26	27	15-2.5	Z7778-40-250-10-10
40	250	12	10	26	27	15-2.5	Z7778-40-250-12-10
40	250	14	10	26	27	15-2.5	Z7778-40-250-14-10
50	125	12	10	32	27	18-2.5	Z7778-50-125-12-10
50	125	14	10	32	27	18-2.5	Z7778-50-125-14-10
50	125	16	10	32	27	18-2.5	Z7778-50-125-16-10
50	150	12	10	32	27	18-2.5	Z7778-50-150-12-10
50	150	14	10	32	27	18-2.5	Z7778-50-150-14-10
50	150	16	10	32	27	18-2.5	Z7778-50-150-16-10
50	175	12	10	32	27	18-2.5	Z7778-50-175-12-10
50	175	14	10	32	27	18-2.5	Z7778-50-175-14-10
50	175	16	10	32	27	18-2.5	Z7778-50-175-16-10
50	200	12	10	32	27	18-2.5	Z7778-50-200-12-10
50	200	14	10	32	27	18-2.5	Z7778-50-200-14-10
50	200	16	10	32	27	18-2.5	Z7778-50-200-16-10
50	250	12	10	32	27	18-2.5	Z7778-50-250-12-10
50	250	14	10	32	27	18-2.5	Z7778-50-250-14-10
50	250	16	10	32	27	18-2.5	Z7778-50-250-16-10
60	150	12	10	42	28	26-3	Z7778-60-150-12-10
60	150	14	10	42	28	26-3	Z7778-60-150-14-10
60	150	16	10	42	28	26-3	Z7778-60-150-16-10
60	175	12	10	42	28	26-3	Z7778-60-175-12-10
60	175	14	10	42	28	26-3	Z7778-60-175-14-10
60	175	16	10	42	28	26-3	Z7778-60-175-16-10
60	200	12	10	42	28	26-3	Z7778-60-200-12-10
60	200	14	10	42	28	26-3	Z7778-60-200-14-10
60	200	16	10	42	28	26-3	Z7778-60-200-16-10
60	250	12	10	42	28	26-3	Z7778-60-250-12-10
60	250	14	10	42	28	26-3	Z7778-60-250-14-10
60	250	16	10	42	28	26-3	Z7778-60-250-16-10
80	150	12	10	55	31	26-3	Z7778-80-150-12-10
80	150	14	10	55	31	26-3	Z7778-80-150-14-10
80	150	16	10	55	31	26-3	Z7778-80-150-16-10
80	175	12	10	55	31	26-3	Z7778-80-175-12-10
80	175	14	10	55	31	26-3	Z7778-80-175-14-10
80	175	16	10	55	31	26-3	Z7778-80-175-16-10

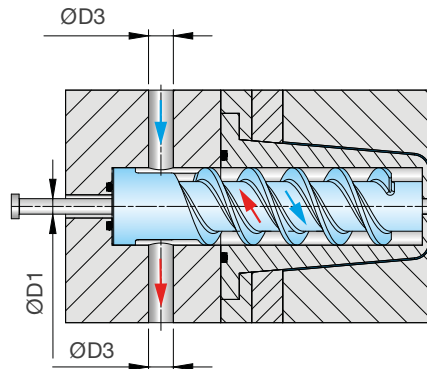


D	L	D3	D1	D2	P	Z7730-	Order No.
80	175	12	10	55	31	26-3	Z7778-80-175-12-10
80	175	14	10	55	31	26-3	Z7778-80-175-14-10
80	175	16	10	55	31	26-3	Z7778-80-175-16-10
80	175	20	10	55	31	26-3	Z7778-80-175-20-10
80	200	12	10	55	31	26-3	Z7778-80-200-12-10
80	200	14	10	55	31	26-3	Z7778-80-200-14-10

D	L	D3	D1	D2	P	Z7730-	Order No.
80	200	16	10	55	31	26-3	Z7778-80-200-16-10
80	200	20	10	55	31	26-3	Z7778-80-200-20-10
80	250	12	10	55	31	26-3	Z7778-80-250-12-10
80	250	14	10	55	31	26-3	Z7778-80-250-14-10
80	250	16	10	55	31	26-3	Z7778-80-250-16-10
80	250	20	10	55	31	26-3	Z7778-80-250-20-10

- 3D gedruckter Kühlkern flexibel an Konstruktion anpassbar
- Andere Durchmesser, Längen und Ausführungen kurzfristig lieferbar
- Keine Druckverluste durch Querschnittsänderung (rheologisch ausgelegt)

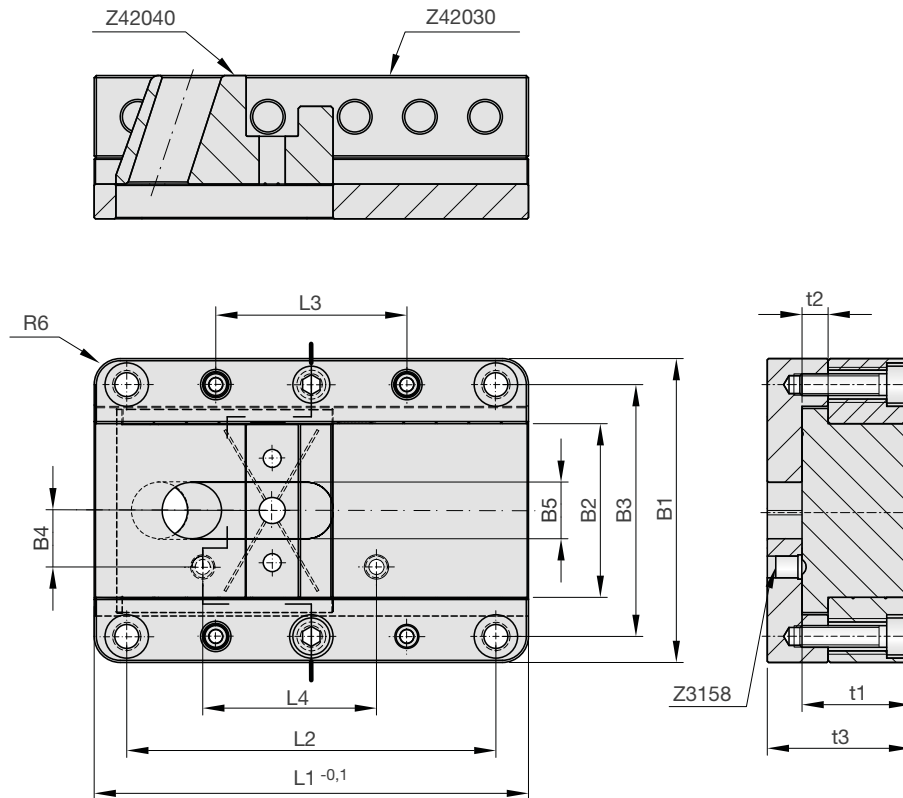
- 3D printed cooling core flexibly adaptable to design
- Other diameters, lengths and designs available at short notice
- No pressure loss due to change in cross-section (rheologically designed)





Z42010-Set

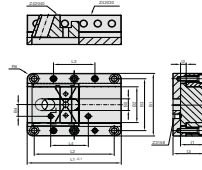
Schieberbaukasten
Slide construction kit



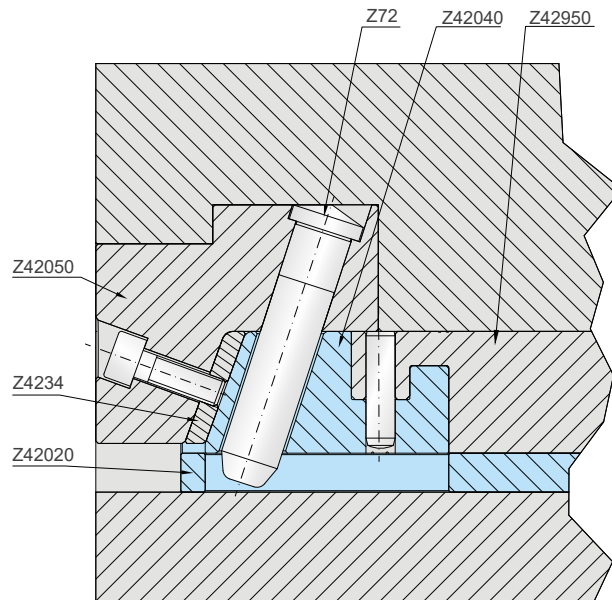
Mat.: ST

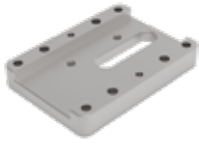


B2	t1	L1	B1	B3	B4	B5	L2	L3	L4	t2	t3	Order No.
20	12	50	50	40	9.5	11	35	17	18	5	20	Z42010-Set-20-12-50
20	12	65	50	40	9.5	11	50	25	23	5	20	Z42010-Set-20-12-65
20	12	80	50	40	9.5	11	65	32	35	5	20	Z42010-Set-20-12-80
20	16	50	50	40	9.5	11	35	17	18	5	24	Z42010-Set-20-16-50
20	16	65	50	40	9.5	11	50	25	23	5	24	Z42010-Set-20-16-65
20	16	80	50	40	9.5	11	65	32	35	5	24	Z42010-Set-20-16-80
25	12	50	55	40	10	11	35	17	18	5	20	Z42010-Set-25-12-50
25	12	65	55	40	10	11	50	25	23	5	20	Z42010-Set-25-12-65
25	12	80	55	40	10	11	65	32	35	5	20	Z42010-Set-25-12-80
25	16	50	55	43	10	11	35	17	18	5	24	Z42010-Set-25-16-50
25	16	65	55	43	10	11	50	25	23	5	24	Z42010-Set-25-16-65
25	16	80	55	43	10	11	65	32	35	5	24	Z42010-Set-25-16-80
25	20	65	55	43	10	13	50	25	23	6	28	Z42010-Set-25-20-65
25	20	80	55	43	11	13	65	32	35	6	28	Z42010-Set-25-20-80
25	20	100	55	43	11	13	85	44	40	6	28	Z42010-Set-25-20-100
25	25	80	55	43	11	13	65	32	35	6	33	Z42010-Set-25-25-80
25	25	100	55	43	11	13	85	44	40	6	33	Z42010-Set-25-25-100
32	12	50	55	40	10	11	35	17	18	5	20	Z42010-Set-32-12-50
32	12	65	55	40	10	11	50	25	23	5	20	Z42010-Set-32-12-65
32	12	80	55	40	10	11	65	32	35	5	20	Z42010-Set-32-12-80
32	16	50	55	43	10	11	35	17	18	5	24	Z42010-Set-32-16-50
32	16	65	55	43	10	11	50	25	23	5	24	Z42010-Set-32-16-65



B2	t1	L1	B1	B3	B4	B5	L2	L3	L4	t2	t3	Order No.
32	16	80	62	50	11	13	65	32	35	5	24	Z42010-Set-32-16-80
32	20	65	62	50	11	13	50	25	23	6	28	Z42010-Set-32-20-65
32	20	80	62	50	11	13	65	32	35	6	28	Z42010-Set-32-20-80
32	20	100	62	50	11	13	85	44	40	6	28	Z42010-Set-32-20-100
32	25	80	62	50	11	13	65	32	35	6	33	Z42010-Set-32-25-80
32	25	100	62	50	11	13	85	44	40	6	33	Z42010-Set-32-25-100
40	20	65	70	58	13	13	50	25	23	6	28	Z42010-Set-40-20-65
40	20	80	70	58	13	13	65	32	35	6	28	Z42010-Set-40-20-80
40	20	100	70	58	13	13	85	44	40	6	28	Z42010-Set-40-20-100
40	25	80	70	58	13	13	65	32	35	6	33	Z42010-Set-40-25-80
40	25	100	70	58	13	13	85	44	40	6	33	Z42010-Set-40-25-100

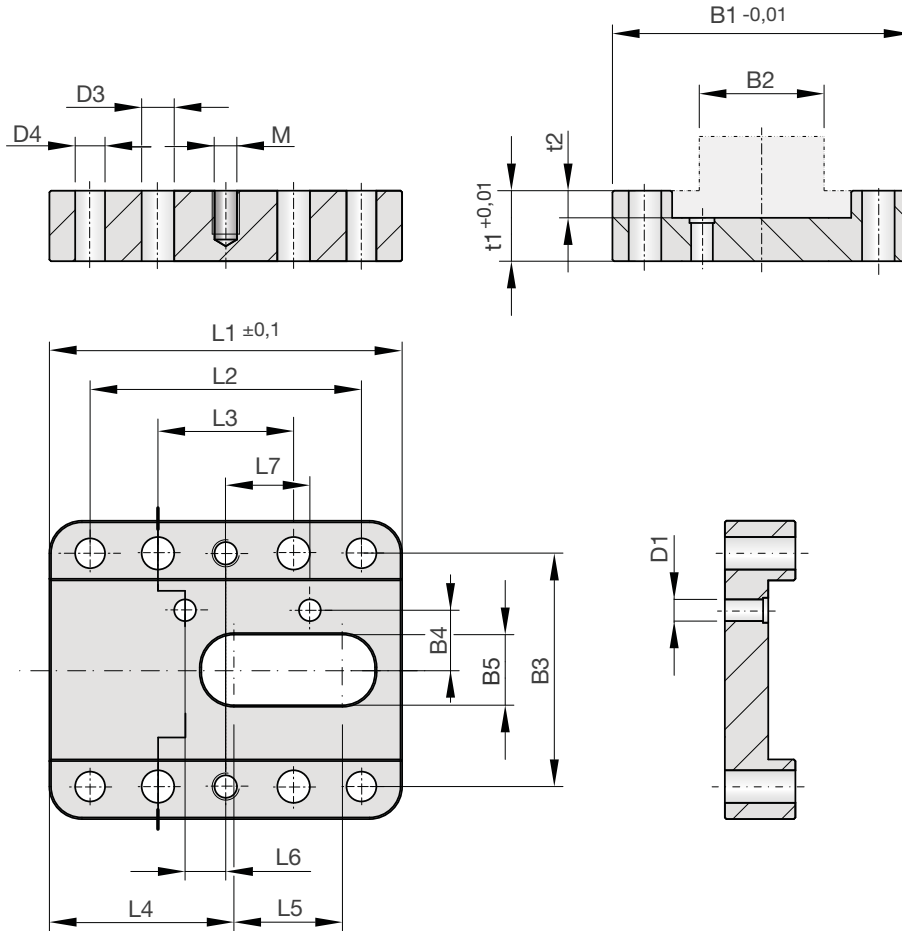




Z42020

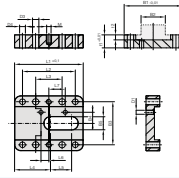
Grundplatte für Z42010

Ground plate for Z42010

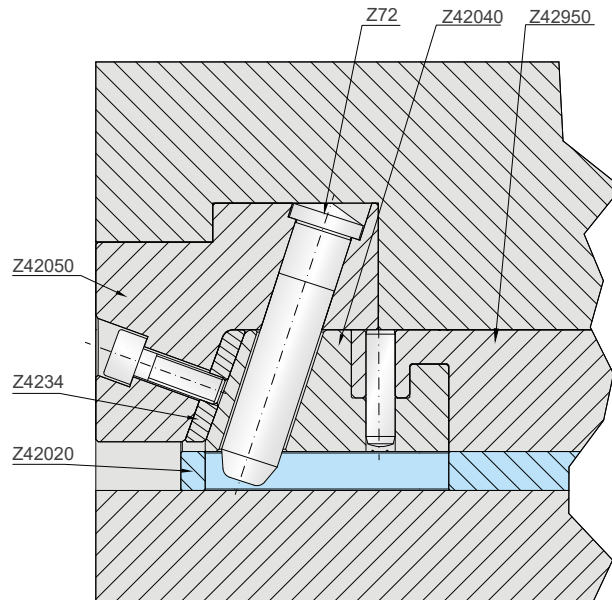


Mat.: 1.2842
58 HRC+2

Type	B1	t1	L1	B2	B3	B4	B5	D1	D3	D4	L2	L3	L4	L5	L6	L7	t2	Order No.
20-12-50	50	13	50	20	38	9.5	11	4	4	4.5	35	17	22	18	4.0	14.0	5	Z42020-20-12-50
20-12-65	50	13	65	20	38	9.5	11	4	6	4.5	50	25	33	22	7.5	15.5	5	Z42020-20-12-65
20-12-80	50	13	80	20	38	9.5	11	4	6	4.5	65	32	40	30	15.0	20.0	5	Z42020-20-12-80
20-16-50	50	13	50	20	38	9.5	11	4	4	5.5	35	17	22	18	4.0	14.0	5	Z42020-20-16-50
20-16-65	50	13	65	20	38	9.5	11	4	6	5.5	50	25	33	22	7.5	15.5	5	Z42020-20-16-65
20-16-80	50	13	80	20	38	9.5	11	4	6	5.5	65	32	40	30	15.0	20.0	5	Z42020-20-16-80
25-12-50	55	13	50	25	43	10.0	11	4	4	4.5	35	17	22	18	4.0	14.0	5	Z42020-25-12-50
25-12-65	55	13	65	25	43	10.0	11	4	6	4.5	50	25	33	22	7.5	15.5	5	Z42020-25-12-65
25-12-80	55	13	80	25	43	10.0	11	4	6	4.5	65	32	40	30	15.0	20.0	5	Z42020-25-12-80
25-16-50	55	13	50	25	43	10.0	11	4	4	5.5	35	17	22	18	4.0	14.0	5	Z42020-25-16-50
25-16-65	55	13	65	25	43	10.0	11	4	6	5.5	50	25	33	22	7.5	15.5	5	Z42020-25-16-65
25-16-80	55	13	80	25	43	10.0	11	4	6	5.5	65	32	40	30	15.0	20.0	5	Z42020-25-16-80
25-20-65	55	13	65	25	43	11.0	13	4	6	5.5	50	25	34	20	7.5	15.5	5	Z42020-25-20-65
25-20-80	55	13	80	25	43	11.0	13	4	6	5.5	65	32	41	28	20.0	20.0	5	Z42020-25-20-80
25-20-100	55	13	100	25	43	11.0	13	4	6	5.5	85	44	51	38	15.0	25.0	5	Z42020-25-20-100
25-25-80	55	14	80	25	43	11.0	13	4	6	5.5	65	32	41	28	20.0	20.0	6	Z42020-25-25-80
25-25-100	55	14	100	25	43	11.0	13	4	6	5.5	85	44	51	38	15.0	25.0	6	Z42020-25-25-100
32-12-50	62	13	50	32	50	11.0	11	4	4	4.5	35	17	22	18	4.0	14.0	5	Z42020-32-12-50
32-12-65	62	13	65	32	50	11.0	11	4	6	4.5	50	25	33	22	17.5	15.5	5	Z42020-32-12-65
32-12-80	62	13	80	32	50	11.0	11	4	6	4.5	65	32	40	30	20.0	20.0	5	Z42020-32-12-80
32-16-50	62	13	50	32	50	11.0	11	4	4	5.5	35	17	22	18	4.0	14.0	5	Z42020-32-16-50



Type	B1	t1	L1	B2	B3	B4	B5	D1	D3	D4	L2	L3	L4	L5	L6	L7	t2	Order No.
32-16-65	62	13	65	32	50	11.0	11	4	6	5.5	50	25	33	22	12.5	15.5	5	Z42020-32-16-65
32-16-80	62	13	80	32	50	11.0	11	5	6	5.5	65	32	40	30	20.0	20.0	5	Z42020-32-16-80
32-20-65	62	13	65	32	50	11.0	13	4	6	5.5	50	25	34	20	12.5	15.5	5	Z42020-32-20-65
32-20-80	62	13	80	32	50	11.0	13	5	6	5.5	65	32	41	28	20.0	20.0	5	Z42020-32-20-80
32-20-100	62	13	100	32	50	11.0	13	5	6	5.5	85	44	51	38	15.0	25.0	5	Z42020-32-20-100
32-25-80	62	14	80	32	50	11.0	13	5	6	5.5	65	32	41	28	20.0	20.0	6	Z42020-32-25-80
32-25-100	62	14	100	32	50	11.0	13	5	6	5.5	85	44	51	38	15.0	25.0	6	Z42020-32-25-100
40-20-65	70	13	65	40	58	13.0	13	5	6	5.5	50	25	34	20	12.5	15.5	5	Z42020-40-20-65
40-20-80	70	13	80	40	58	13.0	13	5	6	5.5	65	32	41	28	20.0	20.0	5	Z42020-40-20-80
40-20-100	70	13	100	40	58	13.0	13	5	6	5.5	85	44	51	38	15.0	25.0	5	Z42020-40-20-100
40-25-80	70	14	80	40	58	13.0	13	5	6	5.5	65	32	41	28	20.0	20.0	6	Z42020-40-25-80
40-25-100	70	14	100	40	58	13.0	13	5	6	5.5	85	44	51	38	15.0	25.0	6	Z42020-40-25-100

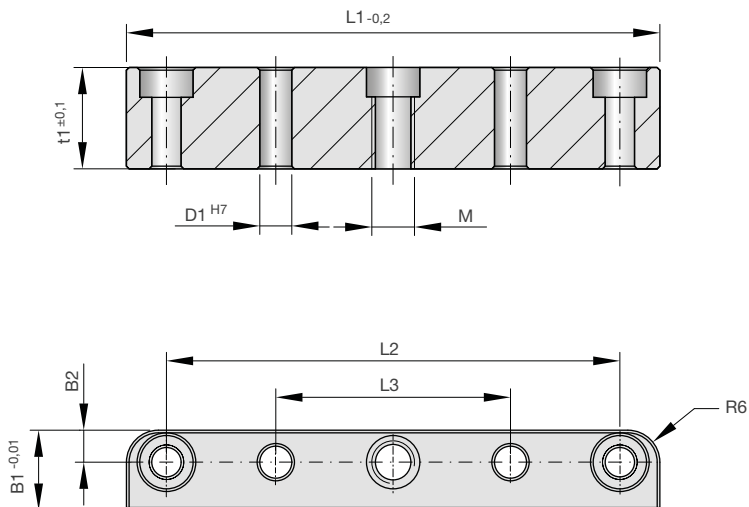




Z42030

Führungsleiste für Z42010

Guide strip for Z42010



Mat.: 1.2842
58 HRC+2
DLC



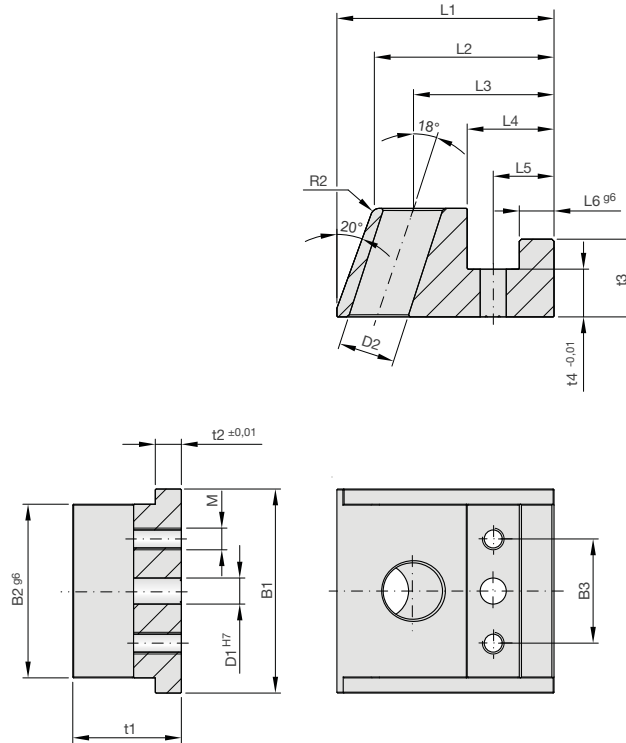
B1	t1	L1	B2	D1	L2	L3	M	Order No.
15	7	50	6	5	35	17	6	Z42030-15-7-50
15	7	65	6	6	50	25	6	Z42030-15-7-65
15	7	80	6	6	65	32	6	Z42030-15-7-80
15	11	50	6	5	35	17	8	Z42030-15-11-50
15	11	65	6	6	50	25	8	Z42030-15-11-65
15	11	80	6	6	65	32	8	Z42030-15-11-80
15	15	65	6	6	50	25	8	Z42030-15-15-65
15	15	80	6	6	65	32	8	Z42030-15-15-80
15	15	100	6	6	85	44	8	Z42030-15-15-100
15	19	80	6	6	65	32	8	Z42030-15-19-80
15	19	100	6	6	85	44	8	Z42030-15-19-100



Z42040

Schieber für Z42010

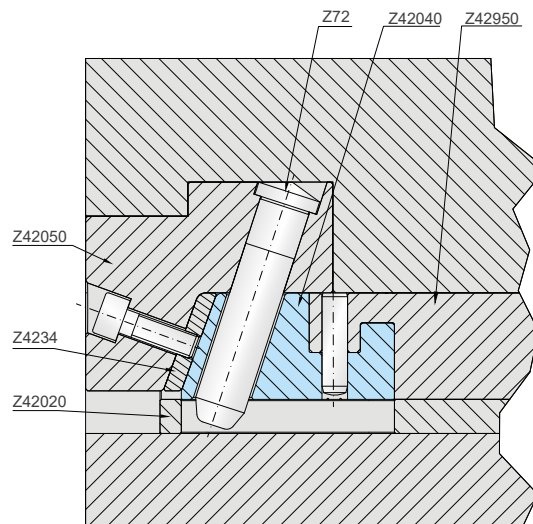
Slide for Z42010



Mat.: 1.2343
52 HRC+2



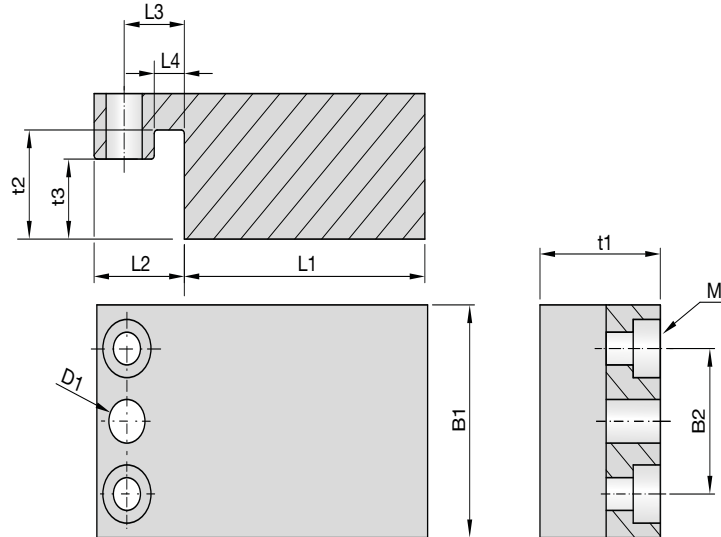
B2	t1	L1	B1	B3	B4	D1	D2	L2	L3	L4	L5	L6	t2	t3	t4	M	Order No.
20	12	40	27	11.5	6	3	11	36.18	27.82	15	10	5	5	7.9	6	M3	Z42040-20-12-40
20	16	45	27	11.5	7	3	11	39.90	31.77	15	10	5	5	10.9	7	M3	Z42040-20-16-45
25	12	40	32	15.0	6	4	11	36.18	27.82	15	10	5	5	7.9	6	M3	Z42040-25-12-40
25	16	45	32	15.0	7	4	11	39.90	31.77	15	10	5	5	10.9	7	M4	Z42040-25-16-45
25	20	50	32	15.0	11	4	13	43.45	34.34	15	10	5	5	14.9	11	M4	Z42040-25-20-50
25	25	50	32	15.0	13	4	13	41.63	32.50	20	14	8	6	17.9	13	M4	Z42040-25-25-50
32	12	40	39	20.0	6	6	11	36.18	27.82	15	10	5	5	7.9	6	M3	Z42040-32-12-40
32	16	45	39	20.0	7	6	11	39.90	31.77	15	10	5	5	10.9	7	M4	Z42040-32-16-45
32	20	50	39	20.0	11	6	13	43.45	34.34	15	10	5	5	14.9	11	M4	Z42040-32-20-50
32	25	50	39	20.0	13	6	13	41.63	32.50	20	14	8	6	17.9	13	M5	Z42040-32-25-50
40	20	50	47	24.0	11	6	13	43.45	34.34	15	10	5	5	14.9	11	M4	Z42040-40-20-50
40	25	50	47	24.0	13	6	13	41.63	32.50	20	14	8	6	17.9	13	M5	Z42040-40-25-50





Z42950

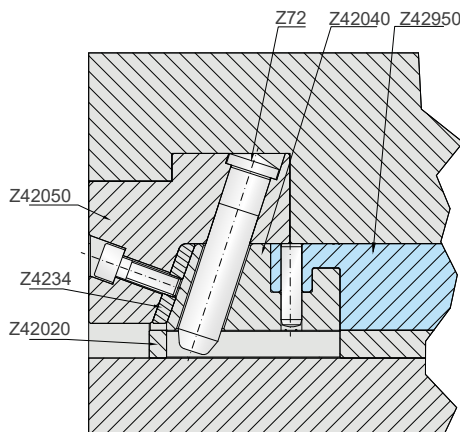
Schieberaufsatz
Slider attachment



52 + 2HRC



B1	t1	L1	Mat.	B2	D1	L2	L3	L4	t2	t3	M	Order No.
20	12	30	2343	11.5	3	15	10	5	8	6	M3	Z42950-20-12-30-2343
20	12	30	2767	11.5	3	15	10	5	8	6	M3	Z42950-20-12-30-2767
20	16	30	2343	11.5	3	15	10	5	11	7	M3	Z42950-20-16-30-2343
20	16	30	2767	11.5	3	15	10	5	11	7	M3	Z42950-20-16-30-2767
25	12	30	2343	15	4	15	10	5	8	6	M3	Z42950-25-12-30-2343
25	12	30	2767	15	4	15	10	5	8	6	M3	Z42950-25-12-30-2767
25	16	30	2343	15	4	15	10	5	11	7	M4	Z42950-25-16-30-2343
25	16	30	2767	15	4	15	10	5	11	7	M4	Z42950-25-16-30-2767
25	20	40	2343	15	4	15	10	5	15	11	M4	Z42950-25-20-40-2343
25	20	40	2767	15	4	15	10	5	15	11	M4	Z42950-25-20-40-2767
25	25	40	2343	15	4	20	14	8	18	13	M4	Z42950-25-25-40-2343
25	25	40	2767	15	4	20	14	8	18	13	M4	Z42950-25-25-40-2767
32	12	30	2343	20	6	15	10	5	8	6	M3	Z42950-32-12-30-2343
32	12	30	2767	20	6	15	10	5	8	6	M3	Z42950-32-12-30-2767
32	16	30	2343	20	6	15	10	5	11	7	M4	Z42950-32-16-30-2343
32	16	30	2767	20	6	15	10	5	11	7	M4	Z42950-32-16-30-2767
32	20	40	2343	20	6	15	10	5	15	11	M4	Z42950-32-20-40-2343
32	20	40	2767	20	6	15	10	5	15	11	M4	Z42950-32-20-40-2767
32	25	40	2343	20	6	20	14	8	18	13	M5	Z42950-32-25-40-2343
32	25	40	2767	20	6	20	14	8	18	13	M5	Z42950-32-25-40-2767
40	20	40	2343	24	6	15	10	5	15	11	M4	Z42950-40-20-40-2343
40	20	40	2767	24	6	15	10	5	15	11	M4	Z42950-40-20-40-2767
40	25	40	2343	24	6	20	14	8	18	13	M5	Z42950-40-25-40-2343
40	25	40	2767	24	6	20	14	8	18	13	M5	Z42950-40-25-40-2767

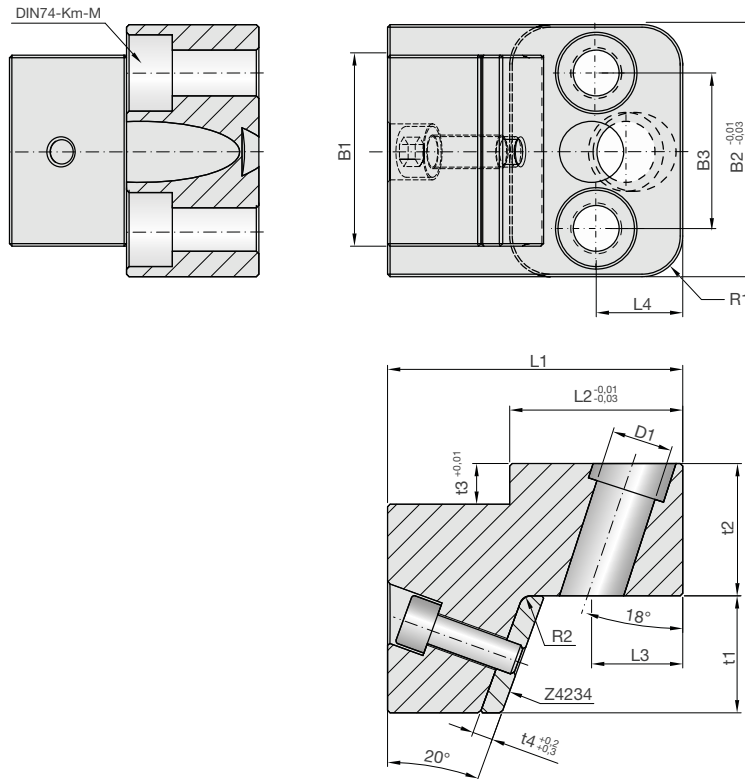




Z42050

Druckstück mit Schrägsäulenaufnahme

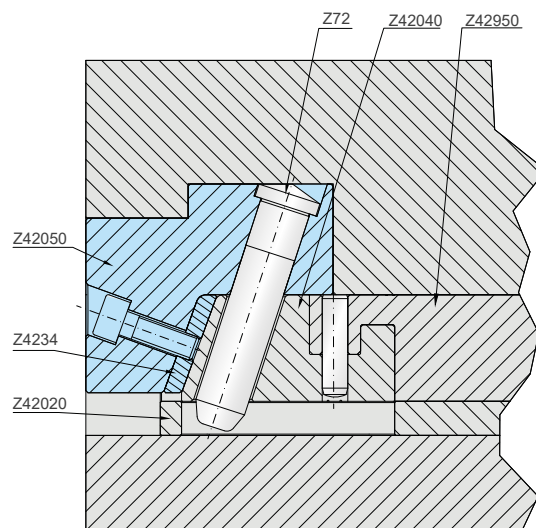
Locking heel double sided



Mat.: 1.2310
1080 N/mm²



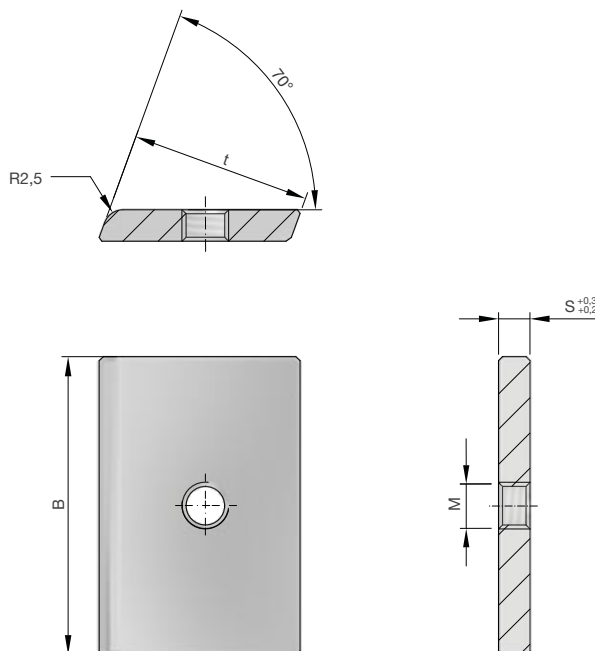
B1	t1	L1	B2	B3	D1	L2	L3	L4	t2	t3	t4	M	R1	R2	Order No.
18	10.5	38	32	21	10	26	12.24	13	15	6	4	6	6	2	Z42050-18-10.5
18	14	42	32	21	10	26	12.56	13	16	6	4	6	6	2	Z42050-18-14
23	10.5	38	32	21	10	26	12.24	13	15	6	4	6	6	2	Z42050-23-10.5
23	14	42	32	21	10	26	12.56	13	16	6	4	6	6	2	Z42050-23-14
23	18	50	40	26	12	34	15.96	17	20	8	4	6	8	2	Z42050-23-18
23	23	54	40	23	12	34	17.9	17	26	8	4	6	8	2	Z42050-23-23
30	10.5	54	46	29	10	34	17.9	17	26	8	4	6	8	2	Z42050-30-10.5
30	14	54	46	29	10	34	17.9	17	26	8	4	8	8	2	Z42050-30-14
30	18	54	46	29	12	34	17.9	17	26	8	4	8	8	2	Z42050-30-18
30	23	54	46	29	12	34	17.9	17	26	8	4	8	8	2	Z42050-30-23
38	18	58	50	31	12	34	17.9	17	26	8	4	8	8	2	Z42050-38-18
38	23	58	50	31	12	34	17.9	17	26	8	4	8	8	2	Z42050-38-23





Z4234

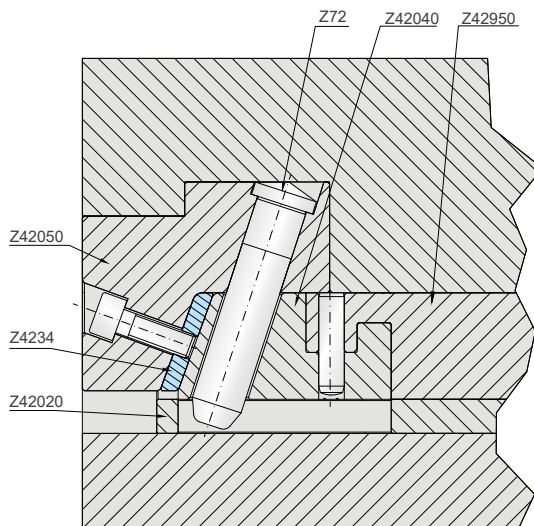
Druckplatte
Pressure plate



Mat.: 1.2842
60 HRC+2



B	t	S	M	Order No.
18	10.5	4	4	Z4234-18-10.5-4
18	14	4	4	Z4234-18-14-4
23	10.5	4	4	Z4234-23-10.5-4
23	14	4	5	Z4234-23-14-4
23	18	4	5	Z4234-23-18-4
23	23	4	5	Z4234-23-23-4
30	10.5	4	5	Z4234-30-10.5-4
30	14	4	6	Z4234-30-14-4
30	18	4	6	Z4234-30-18-4
30	23	4	6	Z4234-30-23-4
38	18	4	6	Z4234-38-18-4
38	23	4	6	Z4234-38-23-4

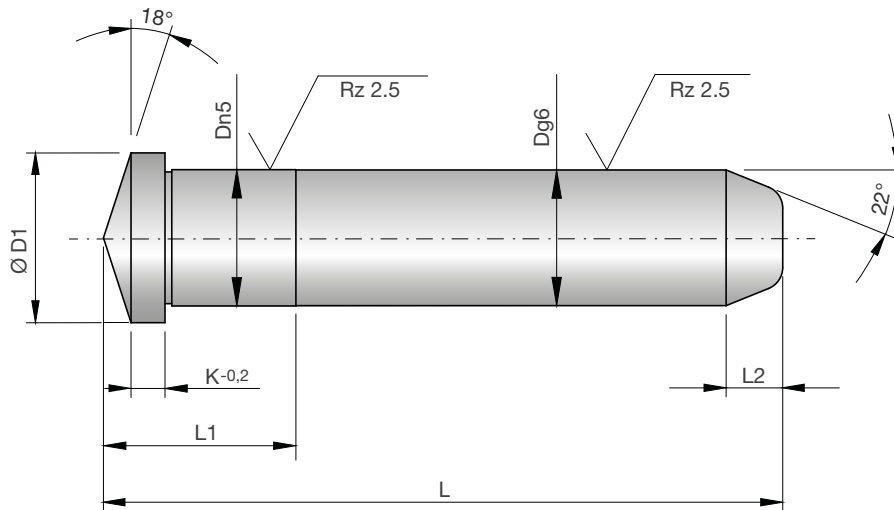




Z72

Schrägsäule

Angle pin

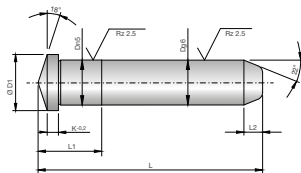


Mat.: 1.7131
58+4 HRC

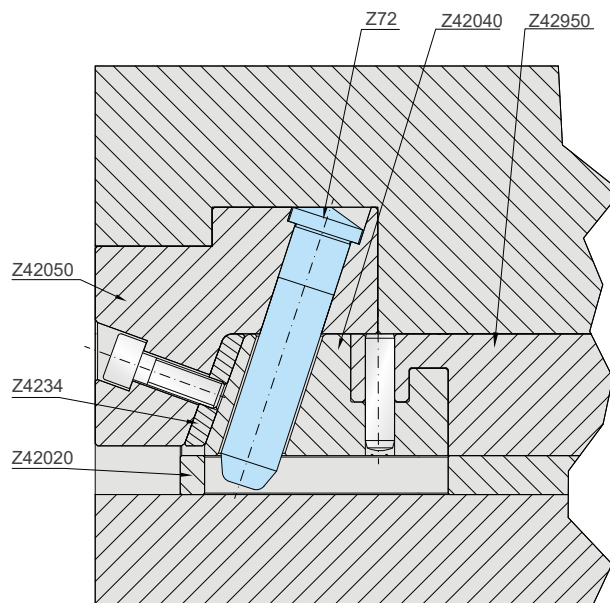


D	L	D1	K	L1	L2	Order No.
10	40	12	2	13	4	Z72-10-40
10	50	12	2	13	4	Z72-10-50
10	60	12	2	13	4	Z72-10-60
10	70	12	2	13	4	Z72-10-70
10	80	12	2	13	4	Z72-10-80
10	90	12	2	13	4	Z72-10-90
10	100	12	2	13	4	Z72-10-100
10	120	12	2	13	4	Z72-10-120
12	60	15	3	17	5	Z72-12-60
12	70	15	3	17	5	Z72-12-70
12	80	15	3	17	5	Z72-12-80
12	90	15	3	17	5	Z72-12-90
12	100	15	3	17	5	Z72-12-100
12	110	15	3	17	5	Z72-12-110
12	120	15	3	17	5	Z72-12-120
12	140	15	3	17	5	Z72-12-140
12	160	15	3	17	5	Z72-12-160
14	60	17	3	17	5	Z72-14-60
14	70	17	3	17	5	Z72-14-70
14	80	17	3	17	5	Z72-14-80
14	90	17	3	17	5	Z72-14-90
14	100	17	3	17	5	Z72-14-100
14	110	17	3	17	5	Z72-14-110
14	120	17	3	17	5	Z72-14-120
14	140	17	3	17	5	Z72-14-140
14	160	17	3	17	5	Z72-14-160
16	60	19	3	22	5	Z72-16-60
16	70	19	3	22	5	Z72-16-70
16	80	19	3	22	5	Z72-16-80
16	90	19	3	22	5	Z72-16-90
16	100	19	3	22	5	Z72-16-100
16	110	19	3	22	5	Z72-16-110
16	120	19	3	22	5	Z72-16-120

D	L	D1	K	L1	L2	Order No.
16	140	19	3	22	5	Z72-16-140
16	160	19	3	22	5	Z72-16-160
16	180	19	3	22	5	Z72-16-180
16	200	19	3	22	5	Z72-16-200
18	60	21	3	22	7	Z72-18-60
18	70	21	3	22	7	Z72-18-70
18	80	21	3	22	7	Z72-18-80
18	90	21	3	22	7	Z72-18-90
18	100	21	3	22	7	Z72-18-100
18	110	21	3	22	7	Z72-18-110
18	120	21	3	22	7	Z72-18-120
18	140	21	3	22	7	Z72-18-140
18	160	21	3	22	7	Z72-18-160
18	180	21	3	22	7	Z72-18-180
18	200	21	3	22	7	Z72-18-200
18	220	21	3	22	7	Z72-18-220
18	240	21	3	22	7	Z72-18-240
20	80	23	4	22	7	Z72-20-80
20	90	23	4	22	7	Z72-20-90
20	100	23	4	22	7	Z72-20-100
20	110	23	4	22	7	Z72-20-110
20	120	23	4	22	7	Z72-20-120
20	140	23	4	22	7	Z72-20-140
20	160	23	4	22	7	Z72-20-160
20	180	23	4	22	7	Z72-20-180
20	200	23	4	22	7	Z72-20-200
20	220	23	4	22	7	Z72-20-220
20	240	23	4	22	7	Z72-20-240
22	60	25	4	27	7	Z72-22-60
22	80	25	4	27	7	Z72-22-80
22	100	25	4	27	7	Z72-22-100
22	120	25	4	27	7	Z72-22-120
22	140	25	4	27	7	Z72-22-140



D	L	D1	K	L1	L2	Order No.	D	L	D1	K	L1	L2	Order No.
22	160	25	4	27	7	Z72-22-160	24	220	27	4	27	7	Z72-24-220
22	180	25	4	27	7	Z72-22-180	24	240	27	4	27	7	Z72-24-240
22	200	25	4	27	7	Z72-22-200	24	280	27	4	27	7	Z72-24-280
22	220	25	4	27	7	Z72-22-220	30	100	35	5	36	7	Z72-30-100
22	240	25	4	27	7	Z72-22-240	30	120	35	5	36	7	Z72-30-120
24	80	27	4	27	7	Z72-24-80	30	140	35	5	36	7	Z72-30-140
24	100	27	4	27	7	Z72-24-100	30	160	35	5	36	7	Z72-30-160
24	120	27	4	27	7	Z72-24-120	30	180	35	5	36	7	Z72-30-180
24	140	27	4	27	7	Z72-24-140	30	200	35	5	36	7	Z72-30-200
24	160	27	4	27	7	Z72-24-160	30	220	35	5	36	7	Z72-30-220
24	180	27	4	27	7	Z72-24-180	30	240	35	5	36	7	Z72-30-240
24	200	27	4	27	7	Z72-24-200	30	280	35	5	36	7	Z72-30-280



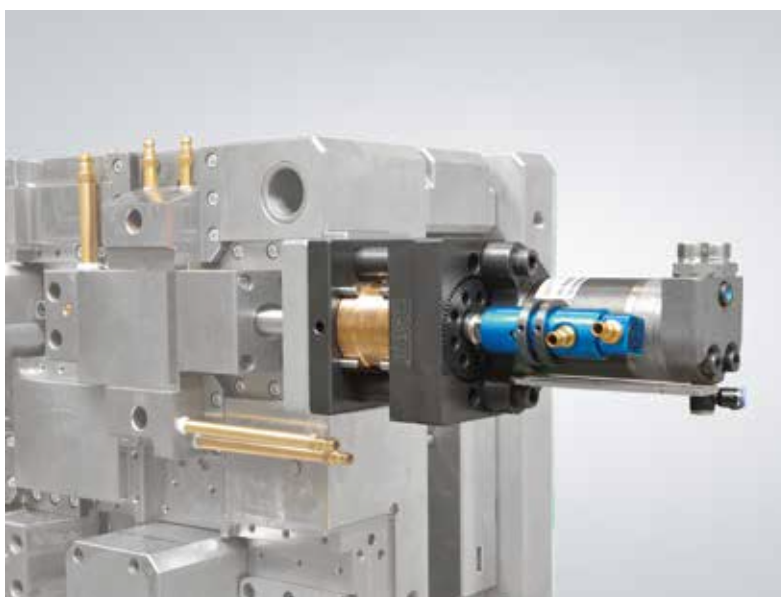
SR

Gewinde-Ausschraubeinheiten

Thread unscrewing units



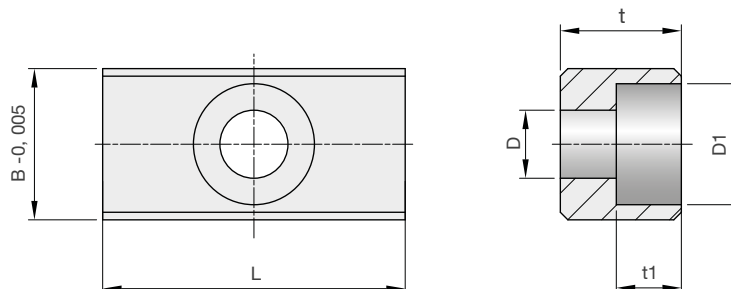
- Robust, handhabungs- und wartungsfreundlich
 - Herstellung von großen Gewindelängen und Durchmessern möglich
 - Gewindefang oder -ende beliebig radial verstellbar
 - Geeignet für Rechts- und Linksgewinde
 - Betrieb in jeder handelsüblichen Spritzmaschine mit Kernzugsteuerung möglich
 - Positionsgenau und reproduzierbar durch mechanischen Anschlag
 - Sonder-Gewinde-Ausschraubeinheiten auf Anfrage
 - Verwendbar zum Ausschrauben von Gewindehülsen
- Robust, easy to handle and to maintain
 - Suitable production of long threads and big diameters
 - Any start and end of threads radial adjustable
 - Suitable for right-hand and left-hand threads
 - Can be used with each conventional injection-moulding machine equipped with a core puller
 - Positional exactness and reproducibility by mechanical stop
 - Customized thread unscrewing units on request
 - Can be used to unscrew threaded sleeves





Z71

Nutenstein
Slot nut



Mat.: 1.7131
58+2 HRC



B	t	L	D	D1	t1	SN3500-	Order No.
10	8	20	4.5	8	4.3	M4x10	Z71-10-8-20
12	8	20	5.3	10	5.3	M5x12	Z71-12-8-20
16	10	22	6.6	11	6.3	M6x16	Z71-16-10-22
20	10	22	6.6	11	6.3	M6x16	Z71-20-10-22
22	12	32	6.6	11	6.3	M6x16	Z71-22-12-32

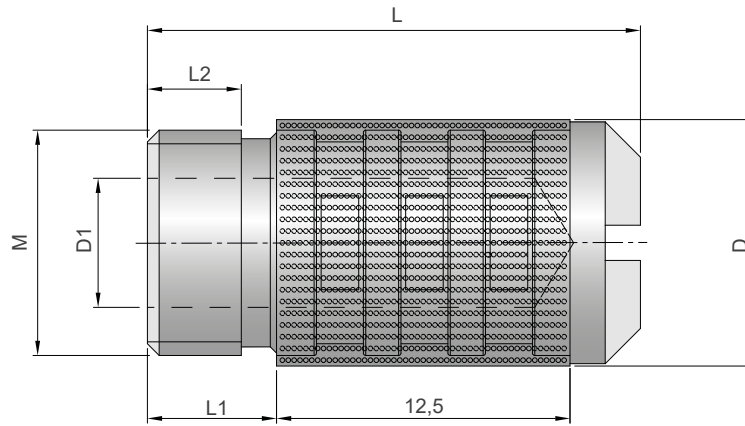




Z7702

Filtereinsatz für Kühlbohrung

Filter insert for cooling bore

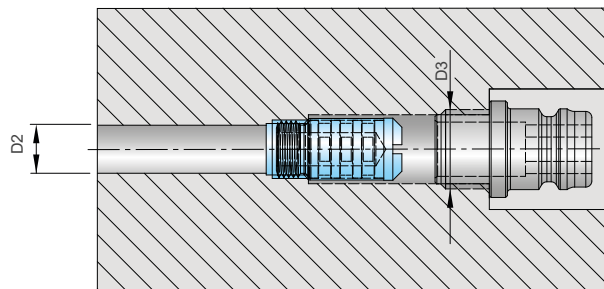


Mat.: Ms + St 17%Cr



D	L	M	L1	L2	D1	D2	D3	Order No.
10.3	21	G1/8	5.5	4	5.5	8	G1/4	Z7702-10.3-21-G1/8

- Innenliegender Filtereinsatz im Bereich der Kühlkreisläufe
- Leichte Montage und Demontage durch den direkten Sitz unterhalb des Kühlungsanschlusses
- Einfache Reinigung mit Pinsel und Wasser
- Internal filter insert in the area of cooling circuits
- Easy mounting and dismounting due to the direct position below the cooling connection
- Easy cleaning with brush and water



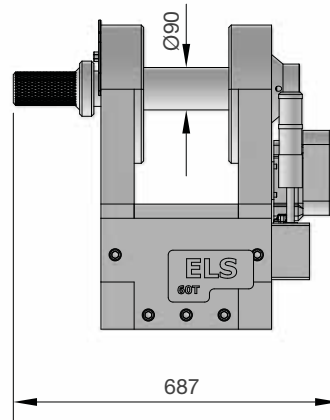
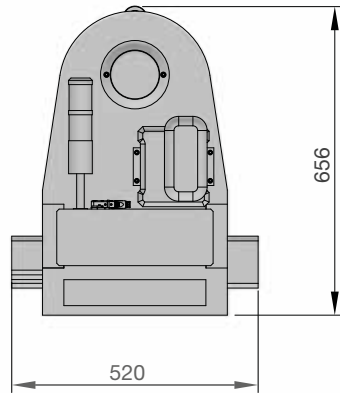
Technische Daten	Technical data	
Gewinde	Thread	G1/8
Porenweite der Filterung	Pore size of the filtration	200 µm
Temperatur	Temperature	≤ 300°C
Druckverlust	Pressure loss	≤ 15 %
		max 10 bar



ELS-60T

Hebesystem Liftmould

Lifting System Liftmould



- CE-Norm
- ANSI / ASME B30.20 (NRTL)
- Richtlinie 2006 / 42 / EG

- CE standard
- ANSI / ASME B30.20 (NRTL)
- Directive 2006 / 42 / EC

Order No.

ELS-60T

- Deutlich verbessertes Handling und Sicherheit
- Es ist keine Modifikation der Krananlage erforderlich, das System funktioniert direkt mit jeder Art von Lasthaken > 90 mm
- Kein manueller Eingriff
- Mit allen Tragbolzen von Liftmould kompatibel
- Rüstzeitersparnis bei jedem Werkzeugwechsel bis zu 10 min

- Significantly improved handling and safety
- No modification of the crane system is required, the system works directly with any type of load hook > 90 mm
- No manual intervention
- Compatible with all Liftmould lifting bolts
- Set-up time savings of up to 10 min for each mould change

Technische Informationen	Technical information	
Gewicht	Weight	400 kg
Akkukapazität	Battery capacity	72 h STANDBY / 400 cycles
Anzahl der Akkus	Battery quantity	2
inkl. Ladegerät	incl.charger	√
Lasthaken nach DIN 15411	Load hook according to DIN 15411	Ø > 90 mm



Fernbedienung mit optischer Anzeige am ELS-60T

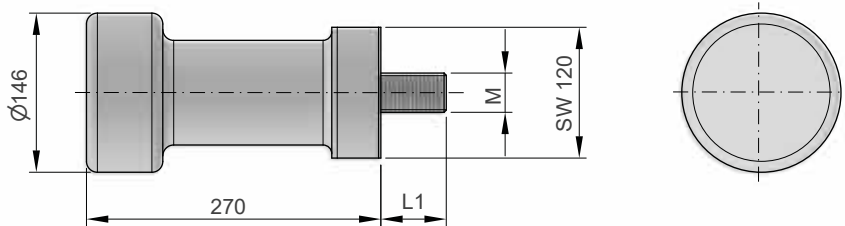
Remote control with optical display on ELS-60T



PL

Hebebolzen Liftmould

Lifting bolt Liftmould



Mat.: ST



- Z1 = Tragfähigkeit
- SF = Sicherheitsfaktor

- Z1 = Load-bearing capacity
- SF = Safety factor

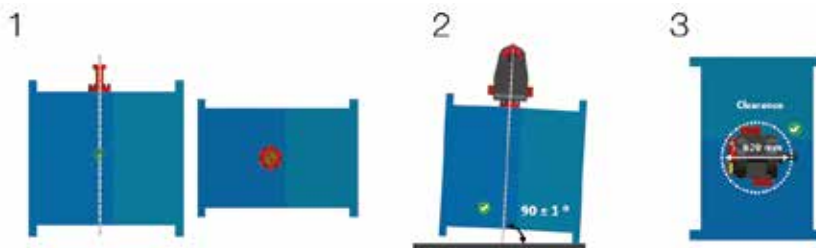
Typ	L1	M	Z1	SF	Order No.
10T36	60	36	10 t	5	PL-10T36
15T42	70	42	15 t	5	PL-15T42
20T48	80	48	20 t	5	PL-20T48
25T56	90	56	25 t	5	PL-25T56
30T64	100	64	30 t	5	PL-30T64
40T80	120	80	40 t	5	PL-40T80

MONTAGEHINWEISE

- 1) Im Werkzeugschwerpunkt montiert
- 2) Nur für den Transport geeignet
Nicht zum Wenden geeignet
- 3) Freiraum für das ELS-60T muss gewährleistet sein

ASSEMBLY INSTRUCTIONS:

- 1) Mounted in the tool centre of gravity
- 2) Only suitable for transport
Not suitable for turning
- 3) Free space for the ELS-60T must be guaranteed

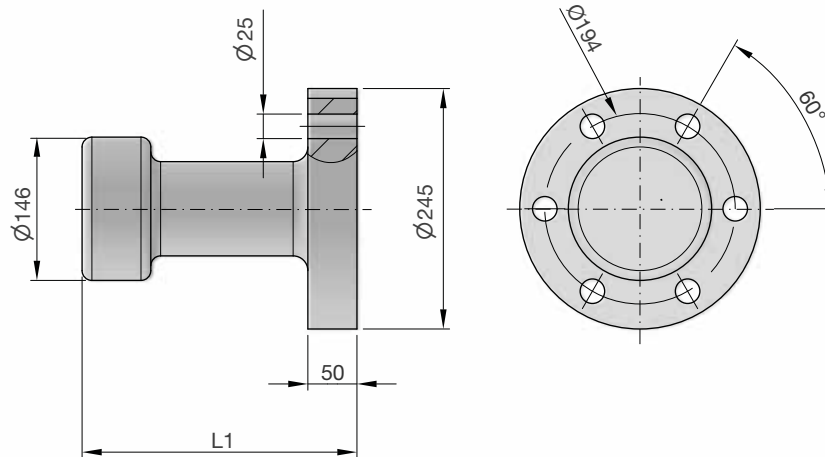




PL-60T

Hebebolzen Liftmould

Lifting bolt Liftmould



Mat.: ST



- Z1 = Tragfähigkeit
- SF = Sicherheitsfaktor

- Z1 = Load-bearing capacity
- SF = Safety factor

- Es müssen Zylinderkopfschraube nach DIN EN ISO 4762-12.9 M24x90 mm zur Befestigung verwendet werden
- Schrauben sind nicht im Lieferumfang enthalten
- Die Befestigung des Bolzens muss im Schwerpunkt der Form liegen

- Allen screws according to DIN EN ISO 4762-12.9 M24x90 mm must be used for fastening
- Screws are not included in the scope of delivery
- The fastening of the bolt must be in the centre of gravity of the mould

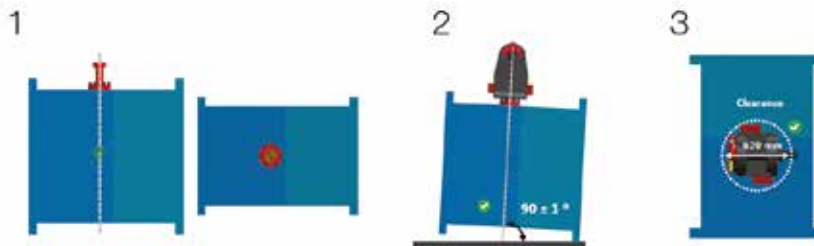
L1	Z1	SF	Order No.
280	60 t	5	PL-60T

MONTAGEHINWEISE

- 1) Im Werkzeugschwerpunkt montiert
- 2) Nur für den Transport geeignet
Nicht zum Wenden geeignet
- 3) Freiraum für das ELS-60T muss gewährleistet sein

ASSEMBLY INSTRUCTIONS:

- 1) Mounted in the tool centre of gravity
- 2) Only suitable for transport
Not suitable for turning
- 3) Free space for the ELS-60T must be guaranteed





SN11011

Werkzeugortung Web-Portal
Tool location web portal



Order No.

SN11011

Portalinformationen

Ortung
 Fahrspur
 Aktivität
 Auslastung
 Verbindung mit externen Sensoren
 Neigungserkennung

Portal information

Locating
 Lane
 Activity
 Capacity utilisation
 Connection with external sensors
 Inclination detection

SICHERHEIT:

- Sigfox Datenübertragung AES Verschlüsselung
- Geräte individuelle Verschlüsselung
- End to end payload-Verschlüsselung mit Chacha 20 Algorithmus
- AES verschlüsselte Firmware
- Firmware Aktualisierung erlaubt nur signierte Firmware Informationen

SECURITY:

- Sigfox data transmission AES encryption
- Devices individual encryption
- „End to end payload encryption with Chacha 20 algorithm
- AES encrypted firmware
- Firmware update only allows signed firmware information

VORTEILE IM WEBPORTAL:

- Verfolgen Sie die Bewegungen Ihrer Werkzeuge
- Sehen Sie die einzelnen Standorte auf der Kartenansicht
- Richten Sie Geozonen ein
- Erhalten Sie Alarmmeldungen beim Verlassen dieser Geozonen
- Finden Sie Ihre Werkzeuge schneller innerhalb Ihres Unternehmens
- Betrachten Sie alle Details der Bewegungen und Mitteilungen
- Konfigurieren Sie Ihre Tracker individuell
- Laden Sie die Auswertungen als .csv/Excel-Datei herunter
- Rufen Sie die Daten sicher über das Webportal an Ihrem Arbeitsplatz ab oder unterwegs über Ihr mobiles Gerät
- Haben Sie immer und überall die Standorte Ihrer Werkzeuge im Blick

ADVANTAGES IN THE WEB PORTAL:

- Track the movements of your tools
- See the individual locations on the map view
- Set up geozones
- Receive alerts when leaving these geozones
- Find your tools faster within your company
- View all the details of the movements and messages
- Configure your trackers individually
- Download the evaluations conveniently as .csv or Excel file
- Retrieve the data securely via the web portal Have an overview of your tools locations always and everywhere

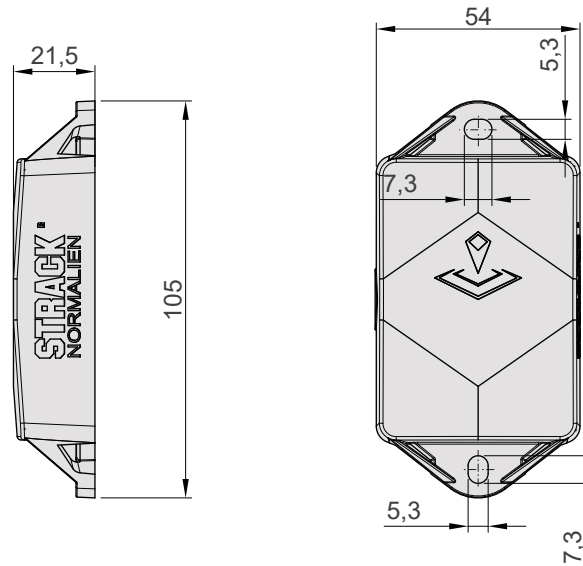




SN11012

toolSTRACK Tracker

toolSTRACK Tracker



Order No.

SN11012

- Der kompakte IoT-Tracker mit langer Batterielaufzeit ermöglicht eine zuverlässige Ortung sowohl außerhalb als auch innerhalb von Gebäuden
- Mit automatischem Flugmodus und zeitversetztem Senden von Positionsdaten ist er besonders benutzerfreundlich und praktisch
- Zusätzlich ist er kompatibel mit einer Vielzahl von BLE Sensoren und nutzt eine Kombination von verschiedenen Ortungsmöglichkeiten, wie GPS, Wi-Fi, Bluetooth und Netzwerk Triangulation, um eine genaue Positionsbestimmung zu gewährleisten
- The compact IoT tracker with long battery life provides reliable tracking both outside and inside buildings
- With automatic flight mode and time-delayed sending of position data, it is particularly user-friendly and practical
- In addition, it is compatible with a wide range of BLE sensors and uses a combination of different tracking options, such as GPS, Wi-Fi, Bluetooth and network triangulation, to ensure accurate positioning

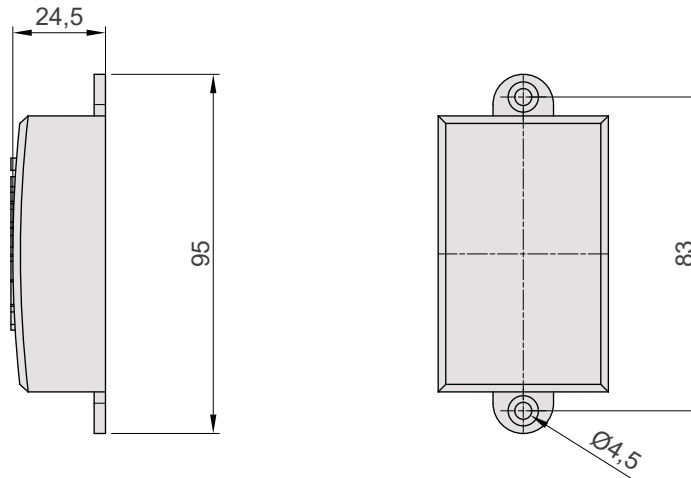
Gehäuse	Housing	Polycarbonat (lexan 943A)
Schutzklasse	Protection class	IP 68
Spannungsversorgung	Power supply	Battery 5200 mAh 3.0V
Laufzeit	Duration	up to 8 years
Ortung	Locating	GPS, Sigfox, WLAN, BLE



SN11013

toolSTRACK Geobeacon

toolSTRACK Geobeacon



Order No.

SN11013

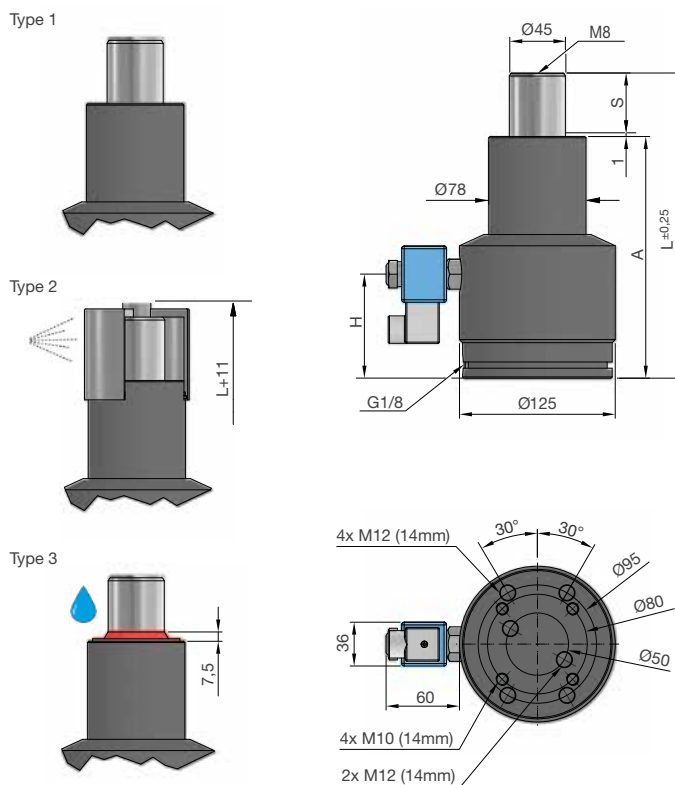
- Egal ob im Innen- oder Außenbereich, Geobeacons benötigen keine Netzwerkverbindung und senden kontinuierlich Signale aus, die von Trackern erkannt werden können
- Geobeacons sind Geräte, die für die Verwendung an verschiedenen Standorten entwickelt wurden
- Unsere Geräte sind einfach zu installieren und können an ausgewählten Orten angebracht werden
- Whether indoors or outdoors, geobeacons do not require a network connection and continuously emit signals that can be detected by trackers
- Geobeacons are devices designed for use in a variety of locations
- Our devices are easy to install and can be placed in selected locations

Gehäuse	Housing	Polycarbonat (lexan 943A)
Schutzklasse	Protection class	IP 65
Spannungsversorgung, Batterien (austauschbar)	Power supply, batteries (replaceable)	2x AA
Laufzeit (Jahre)	Duration (years)	5
Ortung	Locating	BLE – Bluetooth Low Energy



SN2884-1500

Gasdruckfeder gesteuert
Controlled gas spring system



S = Hub
bar = Fülldruck
S = Stroke
bar = Filling pressure



S	Type	daN1	daN2	A	L	L1	bar	Fa	Order No.
50	1	1500	1905	195	245	83.5	90	15.90	SN2884-1500-50-1
50	2	1500	1905	195	245	83.5	90	15.90	SN2884-1500-50-2
50	3	1500	1905	195	245	83.5	90	15.90	SN2884-1500-50-3
75	1	1500	2045	232	307	95.5	90	15.90	SN2884-1500-75-1
75	2	1500	2045	232	307	95.5	90	15.90	SN2884-1500-75-2
75	3	1500	2045	232	307	95.5	90	15.90	SN2884-1500-75-3
100	1	1500	2110	265	365	103.5	90	15.90	SN2884-1500-100-1
100	2	1500	2110	265	365	103.5	90	15.90	SN2884-1500-100-2
100	3	1500	2110	265	365	103.5	90	15.90	SN2884-1500-100-3
125	1	1500	2175	300	425	113.5	90	15.90	SN2884-1500-125-1
125	2	1500	2175	300	425	113.5	90	15.90	SN2884-1500-125-2
125	3	1500	2175	300	425	113.5	90	15.90	SN2884-1500-125-3

Druckmedium	Pressure medium	Stickstoff (N2)
Max. Fülldruck	Max. filling pressure	90 bar
Min. Fülldruck	Min. filling pressure	50 bar
Max. Betriebstemperatur	Max. working temperature	60 °C
Temperaturabhängige Druckerhöhung	Pressure increase due to temperature	0,33 %/1 °C
Max. Kolbengeschwindigkeit	Max. piston speed	0,4 m/s.
Max. empfohlene Hübe	Max. recommended strokes	10-30* S/min.

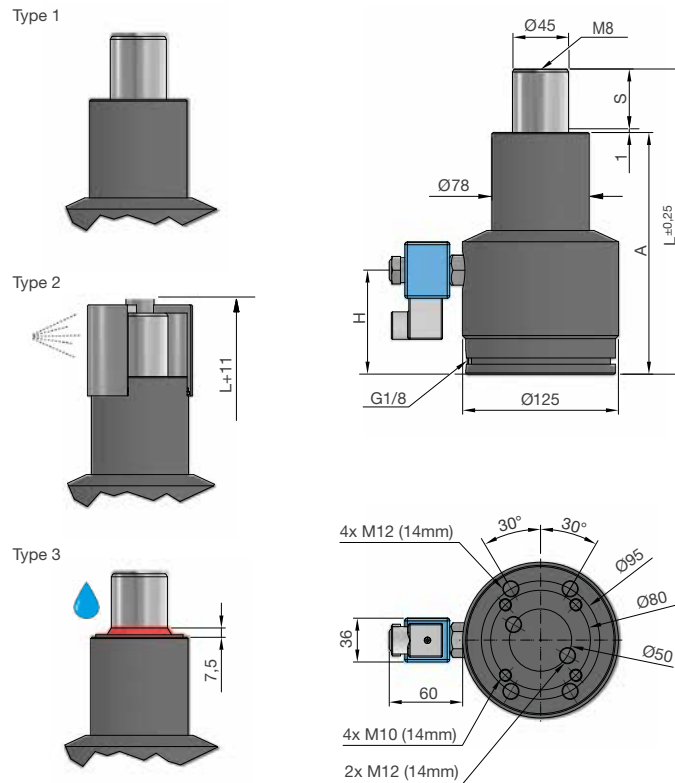
*= Maximale Anzahl abhängig von Arbeitsparametern

*= Maximum rate will depend on working parameters



SN2884-2400

Gasdruckfeder gesteuert
Controlled gas spring system



S = Hub
bar = Fülldruck
S = Stroke
bar = Filling pressure



S	Type	daN1	daN2	A	L	L1	bar	Fa	Order No.
50	1	2400	3180	195	245	83.5	150	15.90	SN2884-2400-50-1
50	2	2400	3180	195	245	83.5	150	15.90	SN2884-2400-50-2
50	3	2400	3180	195	245	83.5	150	15.90	SN2884-2400-50-3
75	1	2400	3410	232	307	95.5	150	15.90	SN2884-2400-75-1
75	2	2400	3410	232	307	95.5	150	15.90	SN2884-2400-75-2
75	3	2400	3410	232	307	95.5	150	15.90	SN2884-2400-75-3
100	1	2400	3520	265	365	103.5	150	15.90	SN2884-2400-100-1
100	2	2400	3520	265	365	103.5	150	15.90	SN2884-2400-100-2
100	3	2400	3520	265	365	103.5	150	15.90	SN2884-2400-100-3
125	1	2400	3630	300	425	113.5	150	15.90	SN2884-2400-125-1
125	2	2400	3630	300	425	113.5	150	15.90	SN2884-2400-125-2
125	3	2400	3630	300	425	113.5	150	15.90	SN2884-2400-125-3

Druckmedium	Pressure medium	Stickstoff (N ₂)
Max. Fülldruck	Max. filling pressure	150 bar
Min. Fülldruck	Min. filling pressure	50 bar
Max. Betriebstemperatur	Max. working temperature	60 °C
Temperaturabhängige Druckerhöhung	Pressure increase due to temperature	0,33 %/1 °C
Max. Kolbengeschwindigkeit	Max. piston speed	0,4 m/s.
Max. empfohlene Hübe	Max. recommended strokes	10-30* S/min.

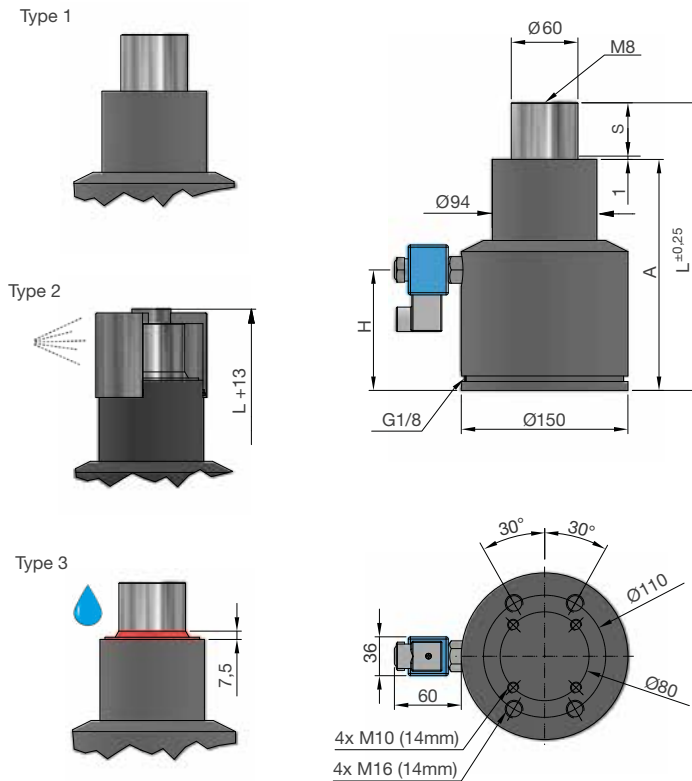
*= Maximale Anzahl abhängig von Arbeitsparametern

*= Maximum rate will depend on working parameters



SN2884-3000

Gasdruckfeder gesteuert
Controlled gas spring system



S = Hub
bar = Fülldruck
S = Stroke
bar = Filling pressure



S	Type	daN1	daN2	A	L	L1	bar	Fa	Order No.
50	1	3000	4065	208	258	88.5	105	28.27	SN2884-3000-50-1
50	2	3000	4065	208	258	88.5	105	28.27	SN2884-3000-50-2
50	3	3000	4065	208	258	88.5	105	28.27	SN2884-3000-50-3
75	1	3000	4465	245	320	100.5	105	28.27	SN2884-3000-75-1
75	2	3000	4465	245	320	100.5	105	28.27	SN2884-3000-75-2
75	3	3000	4465	245	320	100.5	105	28.27	SN2884-3000-75-3
100	1	3000	4515	282	382	112.5	105	28.27	SN2884-3000-100-1
100	2	3000	4515	282	382	112.5	105	28.27	SN2884-3000-100-2
100	3	3000	4515	282	382	112.5	105	28.27	SN2884-3000-100-3
125	1	3000	4655	319	444	124.5	105	28.27	SN2884-3000-125-1
125	2	3000	4655	319	444	124.5	105	28.27	SN2884-3000-125-2
125	3	3000	4655	319	444	124.5	105	28.27	SN2884-3000-125-3

Druckmedium	Pressure medium	Stickstoff (N ₂)
Max. Fülldruck	Max. filling pressure	105 bar
Min. Fülldruck	Min. filling pressure	50 bar
Max. Betriebstemperatur	Max. working temperature	60 °C
Temperaturabhängige Druckerhöhung	Pressure increase due to temperature	0,33 %/1 °C
Max. Kolbengeschwindigkeit	Max. piston speed	0,5 m/s.
Max. empfohlene Hübe	Max. recommended strokes	10-35* S/min.

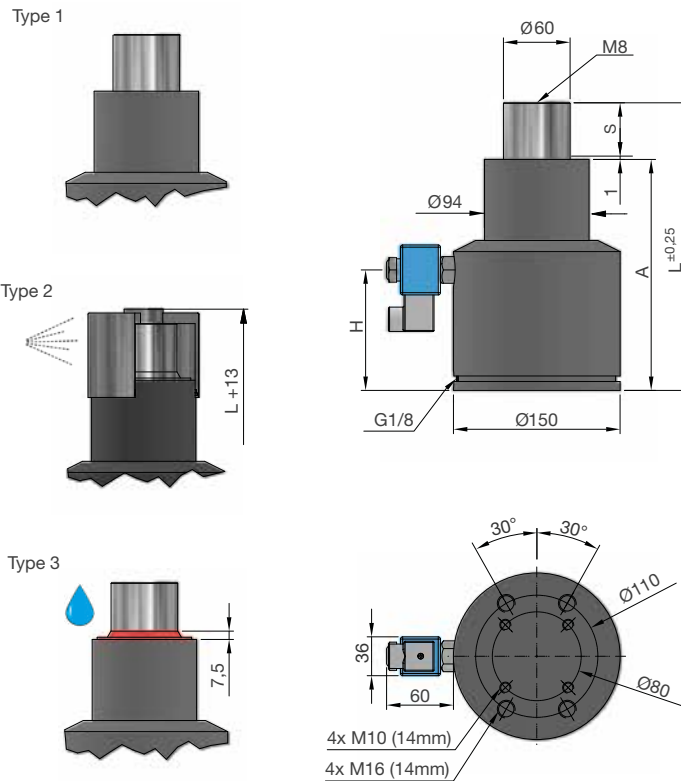
*= Maximale Anzahl abhängig von Arbeitsparametern

*= Maximum rate will depend on working parameters



SN2884-4500

Gasdruckfeder gesteuert
Controlled gas spring system



S = Hub
bar = Fülldruck
S = Stroke
bar = Filling pressure



S	Type	daN1	daN2	A	L	L1	bar	Fa	Order No.
50	1	4500	5810	208	258	88.5	150	28.27	SN2884-4500-50-1
50	2	4500	5810	208	258	88.5	150	28.27	SN2884-4500-50-2
50	3	4500	5810	208	258	88.5	150	28.27	SN2884-4500-50-3
75	1	4500	6380	245	320	100.5	150	28.27	SN2884-4500-75-1
75	2	4500	6380	245	320	100.5	150	28.27	SN2884-4500-75-2
75	3	4500	6380	245	320	100.5	150	28.27	SN2884-4500-75-3
100	1	4500	6450	282	382	112.5	150	28.27	SN2884-4500-100-1
100	2	4500	6450	282	382	112.5	150	28.27	SN2884-4500-100-2
100	3	4500	6450	282	382	112.5	150	28.27	SN2884-4500-100-3
125	1	4500	6650	319	444	124.5	150	28.27	SN2884-4500-125-1
125	2	4500	6650	319	444	124.5	150	28.27	SN2884-4500-125-2
125	3	4500	6650	319	444	124.5	150	28.27	SN2884-4500-125-3

Druckmedium	Pressure medium	Stickstoff (N ₂)
Max. Fülldruck	Max. filling pressure	150 bar
Min. Fülldruck	Min. filling pressure	50 bar
Max. Betriebstemperatur	Max. working temperature	60 °C
Temperaturabhängige Druckerhöhung	Pressure increase due to temperature	0,33 %/1 °C
Max. Kolbengeschwindigkeit	Max. piston speed	0,5 m/s.
Max. empfohlene Hübe	Max. recommended strokes	8-25* S/min.

*= Maximale Anzahl abhängig von Arbeitsparametern

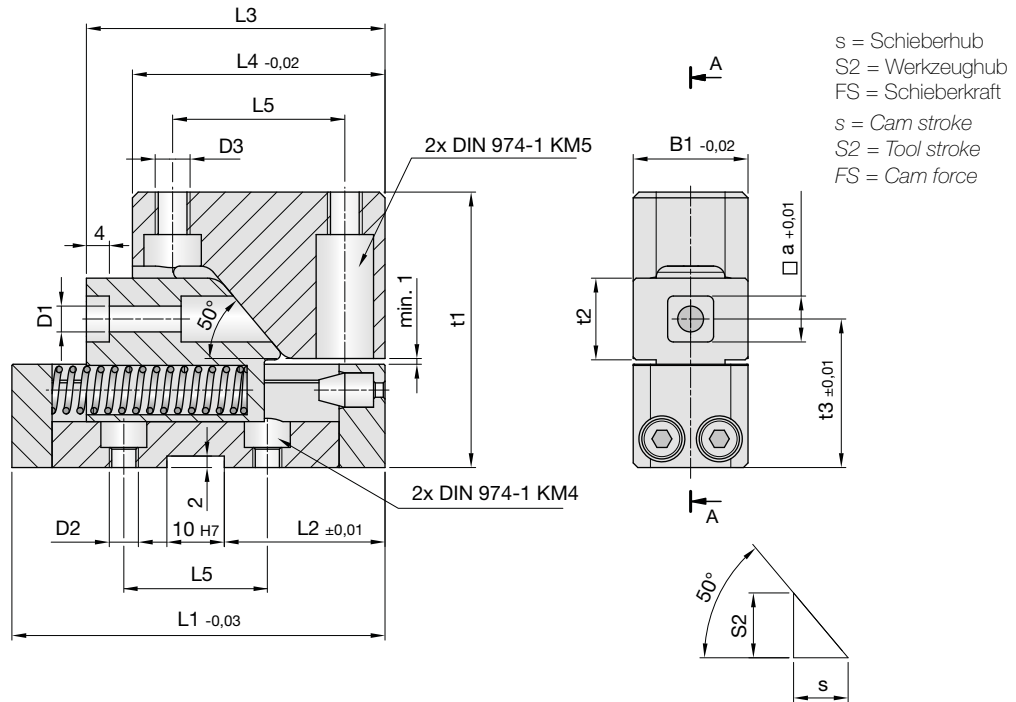
*= Maximum rate will depend on working parameters



SN5630

Minischiebereinheit

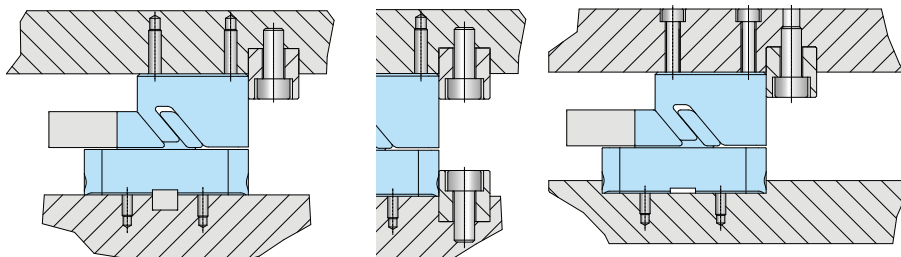
Mini slide units



Mat.: ST



B1	t1	L1	L2	L3	L4	L5	L6	H	t2	t3	a	D1	D2	D3	s	S2	FS [N]	Order No.
20	48	65	28	52.5	44	32	30	2	14.2	25.90	8	4.5	M5	M6	9.5	11.3	1600	SN5630-20
30	62	84	37	69.5	59	45	39	4	19.9	33.04	12	4.5	M5	M6	13.0	17.0	7900	SN5630-30

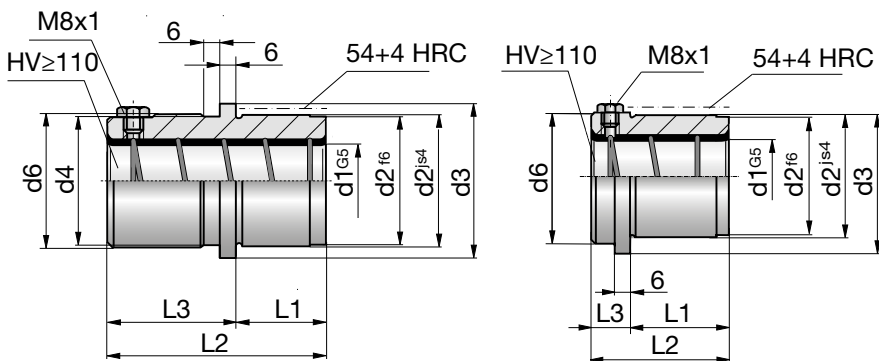




SN4413

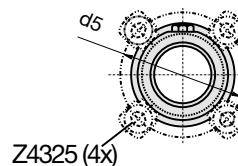
Führungsbuchse Gleitführung mit Festschmierstoff

Guide bush sliding guide with solid lubricant



Z4325 - Nicht im Lieferumfang enthalten

Z4325 - Not included in the extent of delivery



Z4325 (4x)

light line

Mat.: ST + Bronze
54+4HRC + HV ≥ 110

Norm: ISO 9448-6
light line



d1	L2	d2	d3	d4	d5	d6	L1	L3	Order No.
19	35	32	40	0	49	32	23	12	SN4413-19-35
19	43	32	40	32	49	39	23	20	SN4413-19-43
19	59	32	40	32	49	39	23	36	SN4413-19-59
20	35	32	40	0	49	32	23	12	SN4413-20-35
20	43	32	40	32	49	39	23	20	SN4413-20-43
20	59	32	40	32	49	39	23	36	SN4413-20-59
24	35	40	48	0	57	40	23	12	SN4413-24-35
24	59	40	48	40	57	46	23	36	SN4413-24-59
24	79	40	48	40	57	46	23	56	SN4413-24-79
25	35	40	48	0	57	40	23	12	SN4413-25-35
25	59	40	48	40	57	46	23	36	SN4413-25-59
25	79	40	48	40	57	46	23	56	SN4413-25-79
30	42	48	56	0	65	48	30	12	SN4413-30-42
30	75	48	56	48	65	53	30	45	SN4413-30-75
30	93	48	56	48	65	53	30	63	SN4413-30-93
32	42	48	56	0	65	48	30	12	SN4413-32-42
32	75	48	56	48	65	53	30	45	SN4413-32-75
32	93	48	56	48	65	53	30	63	SN4413-32-93
38	52	58	66	0	75	58	37	15	SN4413-38-52
38	82	58	66	58	75	63	37	45	SN4413-38-82
38	108	58	66	58	75	63	37	71	SN4413-38-108
40	52	58	66	0	75	58	37	15	SN4413-40-52
40	82	58	66	58	75	63	37	45	SN4413-40-82
40	108	58	66	58	75	63	37	71	SN4413-40-108
48	65	70	80	0	89	70	47	18	SN4413-48-65
48	97	70	80	70	89	77	47	50	SN4413-48-97
48	127	70	80	70	89	77	47	80	SN4413-48-127
50	65	70	80	0	89	70	47	18	SN4413-50-65
50	97	70	80	70	89	77	47	50	SN4413-50-97
50	127	70	80	70	89	77	47	80	SN4413-50-127
60	80	85	95	0	104	85	60	20	SN4413-60-80
60	116	85	95	85	104	92	60	56	SN4413-60-116
60	150	85	95	85	104	92	60	90	SN4413-60-150
63	80	85	95	0	104	85	60	20	SN4413-63-80
63	116	85	95	85	104	92	60	56	SN4413-63-116
63	150	85	95	85	104	92	60	90	SN4413-63-150
80	80	105	118	0	127	105	60	20	SN4413-80-80
80	120	105	118	105	127	115	60	60	SN4413-80-120
80	150	105	118	105	127	115	60	90	SN4413-80-150



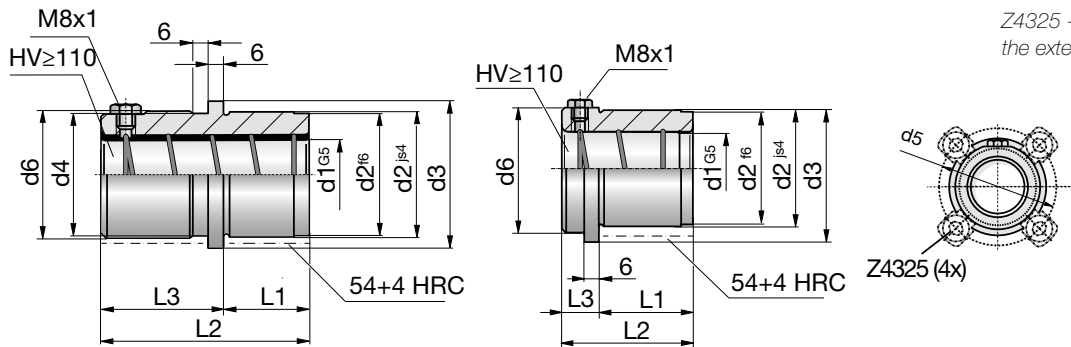
SN4414

Führungsbuchse Gleitführung mit Festschmierstoff

Guide bush sliding guide with solid lubricant

Z4325 - Nicht im
Lieferumfang enthalten

Z4325 - Not included in
the extent of delivery



Mat.: ST + Bronze
54+4HRC + HV ≥ 110

Norm: ISO 9448-6



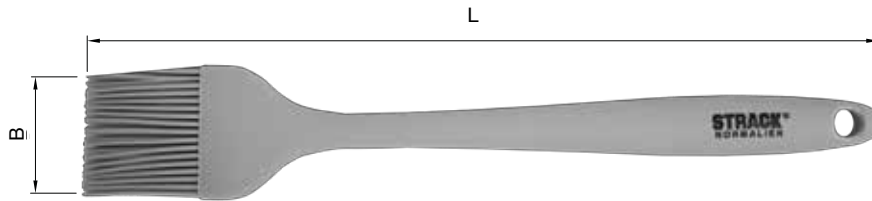
d1	L1	d	d3	d4	d5	d6	L2	Order No.
19	35	32	40	32	49	32	12	SN4414-19-35
19	43	39	40	39	49	32	20	SN4414-19-43
19	59	39	40	39	49	32	36	SN4414-19-59
20	35	32	40	32	49	32	12	SN4414-20-35
20	43	39	40	39	49	32	20	SN4414-20-43
20	59	39	40	39	49	32	36	SN4414-20-59
24	35	40	48	40	57	40	12	SN4414-24-35
24	59	46	48	46	57	40	36	SN4414-24-59
24	79	46	48	46	57	40	56	SN4414-24-79
25	35	40	48	40	57	40	12	SN4414-25-35
25	59	46	48	46	57	40	36	SN4414-25-59
25	79	46	48	46	57	40	56	SN4414-25-79
30	42	48	56	48	65	48	12	SN4414-30-42
30	75	53	56	53	65	48	45	SN4414-30-75
30	93	53	56	53	65	48	63	SN4414-30-93
32	42	48	56	48	65	48	12	SN4414-32-42
32	75	53	56	53	65	48	45	SN4414-32-75
32	93	53	56	53	65	48	63	SN4414-32-93
38	52	58	66	58	75	58	15	SN4414-38-52
38	82	63	66	63	75	58	45	SN4414-38-82
38	108	63	66	63	75	58	71	SN4414-38-108
40	52	58	66	58	75	58	15	SN4414-40-52
40	82	63	66	63	75	58	45	SN4414-40-82
40	108	63	66	63	75	58	71	SN4414-40-108
48	65	70	80	70	89	70	18	SN4414-48-65
48	97	77	80	77	89	70	50	SN4414-48-97
48	127	77	80	77	89	70	80	SN4414-48-127
50	65	70	80	70	89	70	18	SN4414-50-65
50	97	77	80	77	89	70	50	SN4414-50-97
50	127	77	80	77	89	70	80	SN4414-50-127
60	80	85	95	85	104	85	20	SN4414-60-80
60	116	92	95	92	104	85	56	SN4414-60-116
60	150	92	95	92	104	85	90	SN4414-60-150
63	80	85	95	85	104	85	20	SN4414-63-80
63	116	92	95	92	104	85	56	SN4414-63-116
63	150	92	95	92	104	85	90	SN4414-63-150
80	80	105	118	105	127	105	20	SN4414-80-80
80	120	115	118	115	127	105	60	SN4414-80-120
80	150	115	118	115	127	105	90	SN4414-80-150



Z9087

Silikonpinsel

Silicone grease brush



Mat.: SI
max. 230°C/ 446°F



Type	B	L	Order No.
1	32.5	210	Z9087-1
2	44.0	260	Z9087-2

- Keine verlorenen oder verklebten Borsten
- Gleichmäßiger Öl- und Fettauftrag
- Geeignet für alle gängigen Öle und Fette
- Einfach zu reinigen
- No lost or stuck bristles
- Even application of oil and grease
- Suitable for all common oils and greases
- Easy to clean

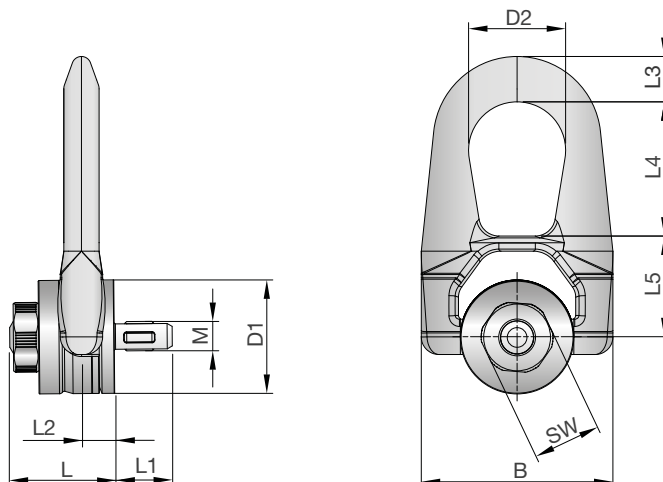




SN1595

Schnellmontage-Ringschraube

Quick-assembly ring bolt



M	L	L1	B	D1	L2	L3	L4	L5	D2	SW	kg	Order No.
M8	31	17.5	53	30	9.5	14	38	30	27	18	0.3	SN1595-M8
M10	31	19.5	53	30	9.5	14	38	30	27	18	0.3	SN1595-M10
M12	40	23.0	76	45	13.0	17	53	40	38	27	0.9	SN1595-M12
M14	40	23.0	76	45	13.0	17	53	40	38	27	0.9	SN1595-M14
M16	40	27.0	76	45	13.0	17	53	40	38	27	0.9	SN1595-M16
M20	55	30.0	115	60	19.0	25	83	55	55	40	2.6	SN1595-M20
M24	55	36.0	115	60	19.0	25	83	55	55	40	2.6	SN1595-M24

Die in nachstehender Tabelle aufgeführten Tragfähigkeiten (Z1) in kg dürfen nicht überschritten werden.

The loading capacities (Z1) in kg which are indicated in the following table should not be exceeded.

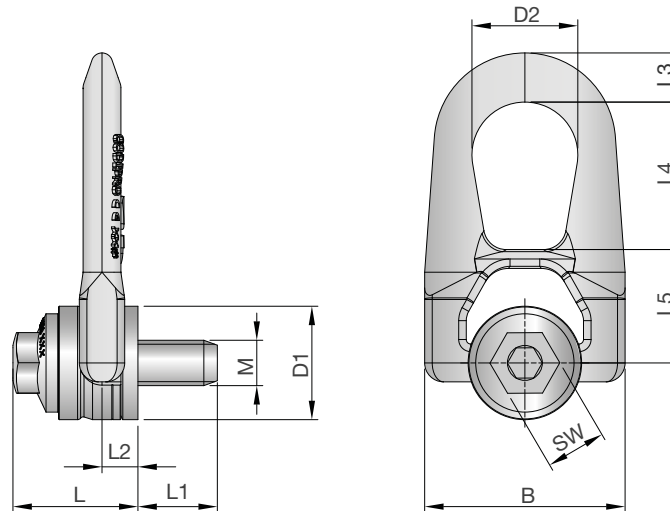
Kind of attachment						
	Z1 max	Z1 max	Z1 max	Z1 max	Z1 max	Z1 max
Number of lifting points	1	1	2	3 / 4		
Inclination angle	0°	90°	90°	45° - 60°		
Loading capacitie:	kg	kg	kg	kg		
SN1595 - M8	250	250	500	380		
SN1595 - M10	400	400	800	600		
SN1595 - M12	650	650	1300	980		
SN1595 - M14	700	700	1400	1050		
SN1595 - M16	1050	1050	2100	1580		
SN1595 - M20	1700	1700	3400	2550		
SN1595 - M24	2500	2500	5000	3750		



SN1597

Sicherheits-Ringschraube

Safety ring bolt



M	L	L1	B	D1	L2	L3	L4	L5	D2	SW	kg	Order No.
M6	33	15	53	30	9.5	14	38	30	27	16	0.3	SN1597-M6
M8	33	15	53	30	9.5	14	38	30	27	16	0.3	SN1597-M8
M10	33	18	53	30	9.5	14	38	30	27	16	0.3	SN1597-M10
M12	33	21	53	30	9.5	14	38	30	27	16	0.3	SN1597-M12
M14	45	23	76	45	13.0	17	53	40	38	20	0.9	SN1597-M14
M16	45	27	76	45	13.0	17	53	40	38	20	0.9	SN1597-M16
M18	45	27	76	45	13.0	17	53	40	38	20	0.9	SN1597-M18
M20	62	25	115	60	19.0	25	83	55	55	24	2.6	SN1597-M20
M22	62	33	115	60	19.0	25	83	55	55	24	2.6	SN1597-M22
M24	62	36	115	60	19.0	25	83	55	55	24	2.6	SN1597-M24
M27	62	40	115	60	19.0	25	83	55	55	24	2.6	SN1597-M27
M30	80	45	141	78	28.0	26	98	77	71	30	5.4	SN1597-M30
M36	80	54	141	78	28.0	26	98	77	71	30	5.4	SN1597-M36
M42	80	63	141	78	28.0	26	98	77	71	30	5.4	SN1597-M42

Die in nachstehender Tabelle aufgeführten Tragfähigkeiten (Z1) in kg dürfen nicht überschritten werden.

The loading capacities (Z1) in kg which are indicated in the following table should not be exceeded.

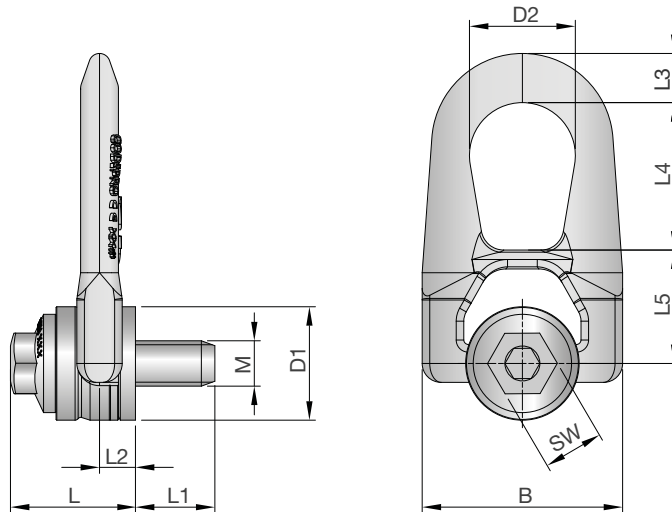
Kind of attachment				
	Z1 max 1	Z1 max 1	Z1 max 2	Z1 max 3 / 4
Number of lifting points	1	1	2	3 / 4
Inclination angle	0°	90°	90°	45° - 60°
Loading capacite:	kg	kg	kg	kg
SN1597 - M6	300	150	300	230
SN1597 - M8	800	400	800	600
SN1597 - M10	1300	700	1400	1050
SN1597 - M12	1500	1050	2100	1580
SN1597 - M14	2500	1400	2800	2100
SN1597 - M16	2700	2000	4000	3000
SN1597 - M18	2500	2300	4600	3450
SN1597 - M20	3200	2900	5800	4350
SN1597 - M22	5500	3500	7000	5250
SN1597 - M24	6000	4400	8800	6600
SN1597 - M27	6000	5700	11400	8550
SN1597 - M30	9000	6700	13400	10050
SN1597 - M36	9000	8000	16000	12000
SN1597 - M42	9500	8500	17000	12750



SN1599

Sicherheits-Ringschraube

Safety ring bolt



M	L	L1	B	D1	L2	L3	L4	L5	D2	SW	kg	Order No.
M6	32	15	53	30	9.5	13	39	30	28	16	0.3	SN1599-M6
M8	32	16	53	30	9.5	13	39	30	28	16	0.3	SN1599-M8
M10	32	16	53	30	9.5	13	39	30	28	16	0.3	SN1599-M10
M12	32	19	53	30	9.5	13	39	30	28	16	0.3	SN1599-M12
M14	44	29	76	45	13.0	17	53	40	38	20	0.9	SN1599-M14
M16	44	26	76	45	13.0	17	53	40	38	20	0.9	SN1599-M16
M18	44	30	76	45	13.0	17	53	40	38	20	1.0	SN1599-M18
M20	44	30	76	45	13.0	17	53	40	38	20	1.0	SN1599-M20
M22	62	42	115	58	19.0	25	83	55	56	24	2.5	SN1599-M22
M24	62	42	115	58	19.0	25	83	55	56	24	2.6	SN1599-M24
M27	62	42	115	58	19.0	25	83	55	56	24	2.7	SN1599-M27
M30	80	47	115	58	19.0	25	83	55	56	24	2.8	SN1599-M30

Die in nachstehender Tabelle aufgeführten Tragfähigkeiten (Z1) in kg dürfen nicht überschritten werden.

The loading capacities (Z1) in kg which are indicated in the following table should not be exceeded.

Kind of attachment				
	Z1 max	Z1 max	Z1 max	Z1 max
Number of lifting points	1	1	2	3 / 4
Inclination angle	0°	90°	90°	45° - 60°
Loading capacitie:	kg	kg	kg	kg
SN1599 - M6	200	100	200	150
SN1599 - M8	400	300	600	450
SN1599 - M10	700	500	1000	750
SN1599 - M12	900	800	1600	1200
SN1599 - M14	1200	1000	2000	1500
SN1599 - M16	1500	1400	2800	2100
SN1599 - M18	1500	1400	2800	2100
SN1599 - M20	1500	1400	2800	2100
SN1599 - M22	2800	2200	4400	3300
SN1599 - M24	2800	2700	5400	4050
SN1599 - M27	2900	2800	5600	4200
SN1599 - M30	3000	3000	6000	4500

STRACK®

NORMALIEN



THINK. Wir entwickeln innovative Lösungen für den Werkzeug- und Formenbau.
TECH. Kunden schätzen unsere Sonderanfertigungen, Produktmodifikationen und individuellen Lösungen. **STRACK.** Als familiengeführter Normalienhersteller bieten wir weltweit auch Standardlösungen an.

THINK. We develop innovative solutions for tool and mould making.
TECH. Our customers appreciate our special productions, product modifications and individually tailored solutions. **STRACK.** As family-owned standard part manufacturer, we also offer standard solutions worldwide.

THINK. Nous développons des solutions innovantes destinées à la production d'outils et de moules. **TECH.** Les clients apprécient nos productions spéciales, nos produits modifiés et nos solutions sur mesure. **STRACK.** Notre entreprise familiale fabrique des éléments normalisés et apporte également des solutions standard à travers le monde.

STRACK NORMA GmbH & Co. KG

Königsberger Str. 11
D-58511 Lüdenscheid
Postfach 16 29
D-58466 Lüdenscheid

Tel +49 2351 8701-0
Fax +49 2351 8701-100
Mail info@strack.de
Web www.strack.de

